

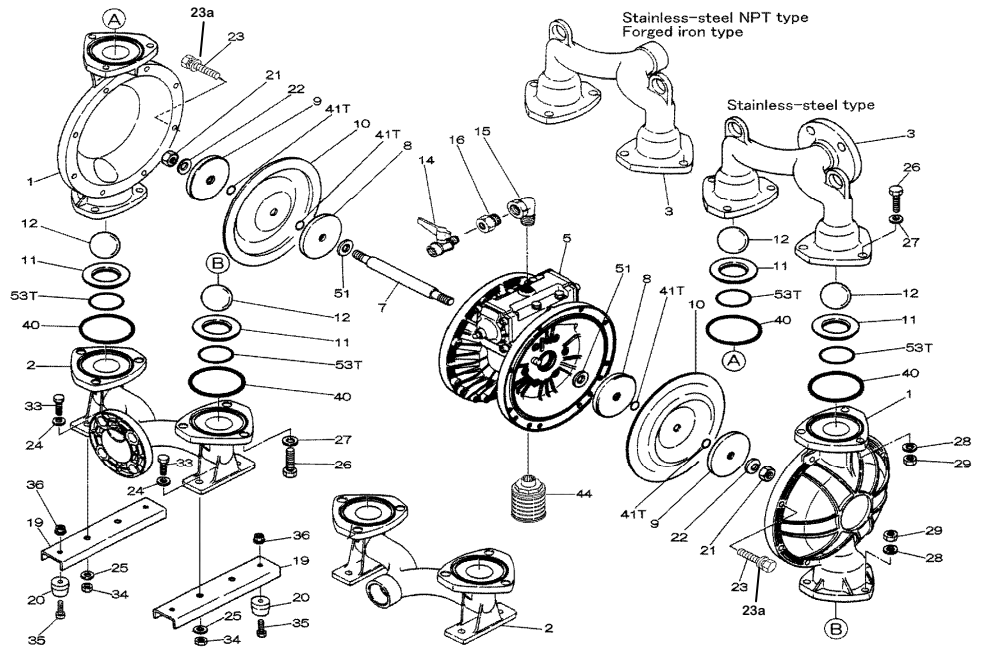
# EXPLODED VIEW & PARTS LISTING

## Air Operated Double Diaphragm Pump

Model: NDP-50BSS

Part # 852718 (FLG)

Part # 852721 (NPT)



### Parts List

| Ref. No. | Description           | Qty | Part No. |
|----------|-----------------------|-----|----------|
| 1        | Out Chamber           | 2   | 712932   |
| 2        | In Manifold - Flange  | 1   | 712557   |
| 2        | In Manifold - NPT     | 1   | 712559   |
| 3        | Out Manifold - Flange | 1   | 712556   |
| 3        | Out Manifold - NPT    | 1   | 712558   |
| 5        | Body Assembly         | 1   | 803112   |
| 7        | Center Rod            | 1   | 711900   |
| 8        | Center Disk           | 2   | 711904   |
| 9        | Center Disk           | 2   | 711905   |
| 10       | Diaphragm             | 2   | 771976   |
| 11       | Valve Seat            | 4   | 772004   |
| 12       | Ball                  | 4   | 773173   |
| 14       | Ball Valve            | 1   | 684322   |
| 15       | Elbow                 | 1   | 682523   |
| 19       | Pump Base             | 2   | 711928   |
| 20       | Cushion               | 4   | 771402   |
| 21       | Nut                   | 2   | 683408   |
| 22       | Coned Disk Spring     | 2   | 682740   |
| 23       | Bolt                  | 16  | 621180   |
| 23a      | Wave Spring Washer    | 16  | 631937   |
| 24       | Plain Washer          | 4   | 631174   |
| 25       | Spring Lock Washer    | 4   | 631937   |
| 26       | Bolt                  | 12  | 621202   |
| 27       | Plain Washer          | 12  | 631175   |
| 28       | Spring Lock Washer    | 12  | 631938   |
| 29       | Nut                   | 12  | 628014   |
| 33       | Bolt                  | 4   | 621175   |
| 34       | Nut                   | 4   | 628013   |
| 35       | Bolt                  | 4   | 611149   |
| 36       | Nut with Flange       | 4   | 682276   |
| 40       | O-ring                | 4   | 640069   |
| 41T      | N/A                   | -   | -        |
| 44       | Muffler               | 1   | 804764   |
| 51       | Cushion               | 2   | 770582   |
| 53T      | N/A                   | -   | -        |

### Repair Kits

**K50-MS Liquid Side Kit includes the following:**

| Ref. No. | Description | Qty | Part No. |
|----------|-------------|-----|----------|
| 10       | Diaphragm   | 2   | 771976   |
| 11       | Valve Seat  | 4   | 772004   |
| 40       | O-ring      | 4   | 684122   |
| 12       | Ball        | 4   | 773173   |

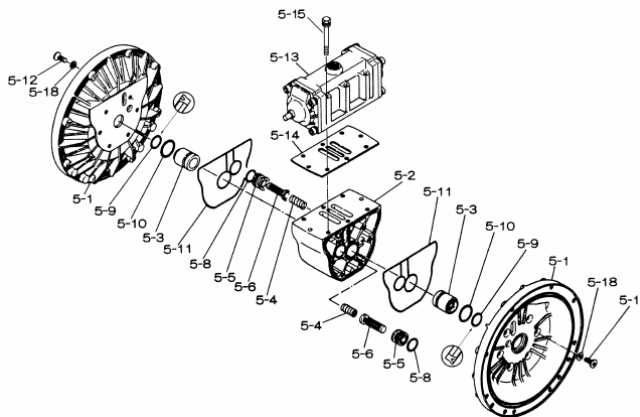
**K45-AM Air Side Kit includes the following:**

| Ref. No. | Description          | Qty | Part No. |
|----------|----------------------|-----|----------|
| 5-3      | Throat Bearing       | 2   | 772689   |
| 5-4      | Spring               | 2   | 711937   |
| 5-5      | Valve Seat           | 2   | 771740   |
| 5-6      | Pilot Valve Assembly | 2   | 832162   |
| 5-8      | O-ring               | 2   | 640020   |
| 5-9      | Packing              | 2   | 685444   |
| 5-10     | O-ring               | 2   | 640029   |
| 5-11     | Gasket               | 2   | 771742   |
| 5-14     | Gasket               | 1   | 771712   |
| 5-13-8   | Gasket               | 2   | 771738   |
| 5-13-12  | C-Spool Assy (CF)    | 1   | 805084   |

Air Operated Double Diaphragm Pump

803112 Body Assembly

| Ref. No. | Description          | Qty | Part No. |
|----------|----------------------|-----|----------|
| 5-1      | Air Chamber          | 2   | 711934   |
| 5-2      | Body                 | 1   | 711936   |
| 5-3      | Throat Bearing       | 2   | 772689   |
| 5-4      | Spring               | 2   | 711937   |
| 5-5      | Valve Seat           | 2   | 771740   |
| 5-6      | Pilot Valve Assembly | 2   | 832162   |
| 5-8      | O-ring               | 2   | 640020   |
| 5-9      | Packing              | 2   | 685444   |
| 5-10     | O-ring               | 2   | 640029   |
| 5-11     | Gasket               | 2   | 771742   |
| 5-12     | Flat Head Bolt       | 12  | 683812   |
| 5-13     | Valve Body Assembly  | 1   | 802971   |
| 5-14     | Gasket               | 1   | 771712   |
| 5-15     | Bolt                 | 6   | 684240   |
| 5-18     | Plain Washer         | 12  | 684987   |



802971 Air Valve Body Assembly

| Ref. No.          | Description       | Qty | Part No. |
|-------------------|-------------------|-----|----------|
| 5-13-1            | Valve Body        | 1   | 711931   |
| 5-13-2            | Cap A             | 1   | 580999   |
| 5-13-3            | Cap B             | 1   | 581000   |
| 5-13-5            | Spring Stopper    | 1   | 771735   |
| 5-13-6            | Reset Button      | 1   | 712976   |
| 5-13-8            | Gasket            | 2   | 771738   |
| 5-13-9            | Bolt              | 8   | 685036   |
| 5-13-12           | C-Spool Assy (CF) | 1   | 805084   |
| 5-13-12 *1 Sleeve | Sleeve Assembly   | 1   | 803675   |
| 5-13-13           | O-ring            | 1   | 640005   |
| 5-13-14           | Cushion           | 4   | 684128   |



805084 C-Spool Assembly (CF)

| Ref. No. | Description     | Qty | Part No. |
|----------|-----------------|-----|----------|
| A        | Sleeve Assy.    | 1   | 803675   |
| B        | O-ring (sleeve) | 6   | 640036   |
| C        | Spool Assy (CF) | 1   | 805085   |
| D        | Spring Retainer | 1   | 771735   |
| E        | C-Spring        | 2   | 711932   |
| F        | Block           | 1   | 771734   |

