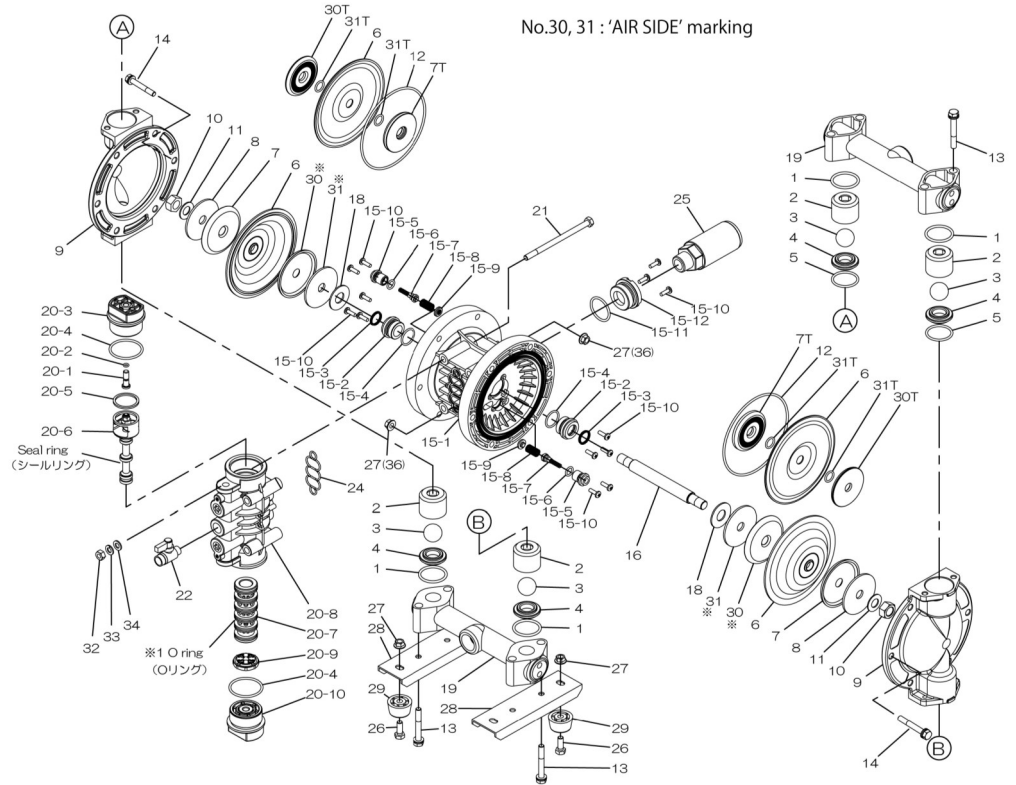
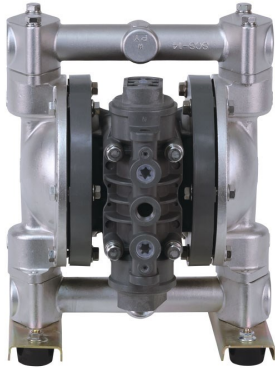


Air Operated Double Diaphragm Pump



Parts List

Ref. No.	Description	Qty.	Part No.
1	O-ring	4	640044
2	Valve Stopper	4	711702
3	Ball	4	773127
4	Valve Seat	4	590087
5	O-ring	2	640134
6	Diaphragm	2	771363
7	Center Disk (liquid side)	2	709151
7T	N/A	-	-
8	Plain Washer (liquid side)	2	709150
9	Out Chamber	2	711687
10	Nut	2	682263
11	Coned Disk Spring	2	682730
12	O-ring	2	640154
13	Bolt	8	686364
14	Bolt	12	686361
15	Body Assembly	1	804604
16	Center Rod	1	709162
18	Cushion	2	771054
19	Manifold	2	831281
20	Valve Body Assembly	1	804608
21	Bolt	6	682265
22	Ball Valve	1	684320
24	Gasket	1	771056
25	Silencer	1	804697
26	Bolt	4	611148
27	Nut with Flange	4	682276
28	Pump Base	2	709156
29	Cushion	4	770551
30	Center Disk (air side)	2	716258
30T	N/A	-	-
31	Washer (air side)	2	716259
31T	N/A	-	-

804604 Body Assembly

Ref. No.	Description	Qty.	Part No.
15-1	Body	1	772929
15-2	Throat Bearing	2	772931
15-3	Packing	2	685414
15-4	O-ring	2	685276
15-5	Valve Seat	2	772932
15-6	O-ring	2	640009
15-7	Pilot Valve Assembly	2	802360
15-8	Spring	2	708666
15-9	Spring Seat	2	772948
15-10	Tapping Screw	13	686030
15-11	O-ring	1	640132
15-12	Bushing	1	772933

804608 Valve Body Assembly

Ref. No.	Description	Qty.	Part No.
20-1	Rest Button	1	772991
20-2	O-ring	1	640002
20-3	Cap A	1	772946
20-4	O-ring	2	640043
20-5	Packing	1	771241
20-6	C Spool Valve Assy.	1	802400
20-6 seal	Seal Ring	5	771053
20-7	Sleeve Assembly	1	804609
20-7-*1	O-ring	6	686029
20-8	Valve Body Assembly	1	832903
20-9	Cushion	1	771914
20-10	Cap B	1	772947

Repair Kits

K25-MH-1 Liquid Side Repair Kit

Ref. No.	Description	Qty.	Part No.
1	O-ring	4	640044
3	Ball	4	773127
5	O-ring	2	640134
6	Diaphragm	2	771363
12	O-ring	2	640154

K225-AP Air Side Repair Kit

Ref. No.	Description	Qty.	Part No.
18	Cushion	2	771054
15-2	Throat Bearing	2	772931
15-3	Packing	2	685414
15-4	O-ring	2	685276
15-5	Valve Seat	2	772932
15-6	O-ring	2	640009
15-7	Pilot Valve Assembly	2	802360
15-8	Spring	2	708666
15-9	Spring Seat	2	772948
15-11	O-ring	1	640132
15-12	Bushing	1	772933
20-2	O-ring	1	640002
20-4	O-ring	2	640043
20-5	Packing	1	771241
20-6 seal	Seal Ring	5	771053
20-7-*1	O-ring	6	686029
20-9	Cushion	1	771914