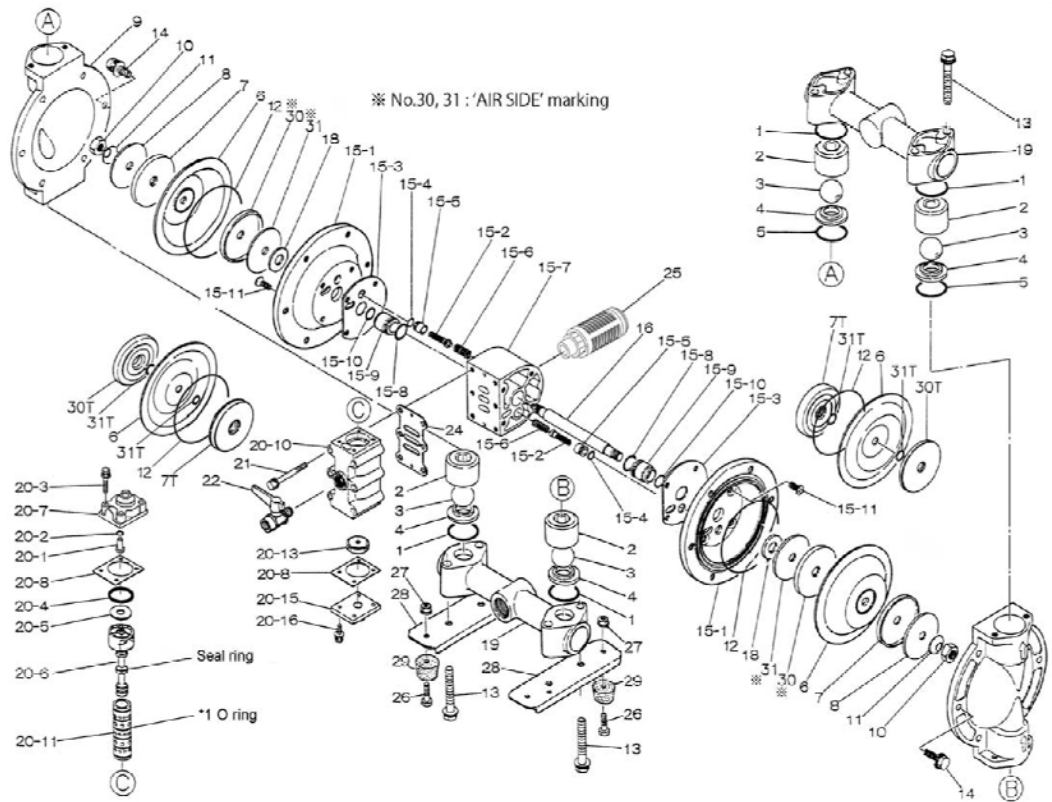


Air Operated Double Diaphragm Pump



Serial number 487505 and above

Ref. No.	Description	Qty.	Part No.
1	O-ring	4	642044
2	Valve Stopper	4	711703
3	Ball	4	770599
4	Valve Seat	4	711707
5	O-ring	2	642134
6	Diaphragm	2	772964
7	Center Disk (liquid side)	2	709151
7T	N/A	-	-
8	Plain Washer (liquid side)	2	709150
9	Out Chamber	2	711694
10	Nut	2	682263
11	Coned Disk Spring	2	682730
13	Bolt	8	686365
14	Bolt	12	686362
15	Body Assembly	1	804880
16	Center Rod	1	709162
18	Cushion	2	771054
19	Manifold	2	831271
20	Valve Body Assembly	1	802362
21	Bolt	6	682265
22	Ball Valve	1	684320
24	Gasket	1	771056
25	Silencer	1	804697
26	Bolt	4	611148
27	Nut with Flange	4	682276
28	Pump Base	2	709156
29	Cushion	4	770551
30	Center Disk (air side)	2	716258
30T	N/A	-	-
31	Washer (air side)	2	716259
31T	N/A	-	-

804880 Body Assembly

Ref. No.	Description	Qty.	Part No.
15-1	Air Chamber	2	715939
15-2	Pilot Valve Assy.	2	802360
15-3	Gasket	2	771057
15-4	O-ring	2	640009
15-5	Valve Seat	2	771945
15-6	Spring	2	708666
15-7	Body	1	709812
15-8	O-ring	2	685276
15-9	Throat Bearing	2	772703
15-10	Packing	2	685414
15-11	Flat Head Bolt	8	682486

802362 Valve Body Assembly

Ref. No.	Description	Qty.	Part No.
20-1	Reset Button	1	709161
20-2	O-ring	1	640005
20-3	Bolt	4	682704
20-4	Packing	1	771241
20-5	Plain Washer	1	715961
20-6	C Spool Valve Assy.	1	802400
20-6 seal	Seal Ring	5	771053
20-7	Cap	1	710221
20-8	Gasket	2	771240
20-10	Valve Body	1	711639
20-11	Sleeve Assembly	1	803931
20-11-*1	O-ring	6	771080
20-13	Cushion	1	771914
20-15	Cap	1	709305
20-16	Bolt	4	682262

Repair Kits

K25-MV-1 Liquid Side Repair Kit

Ref. No.	Description	Qty.	Part No.
1	O-ring	4	642044
3	Ball	4	770599
5	O-ring	2	642134
6	Diaphragm	2	772964

K225-AM Air Side Repair Kit

Ref. No.	Description	Qty.	Part No.
18	Cushion	2	771054
24	Gasket	1	771056
15-2	Pilot Valve Assy.	2	802360
15-3	Gasket	2	771057
15-4	O-ring	2	640009
15-5	Valve Seat	2	771945
15-6	Spring	2	708666
15-8	O-ring	2	685276
15-9	Throat Bearing	2	772703
15-10	Packing	2	685414
20-2	O-ring	1	640005
20-4	Packing	1	771241
20-6-seal	Seal Ring	5	771053
20-8	Gasket	2	771240
20-11-*1	O-ring	6	771080
20-13	Cushion	1	771914