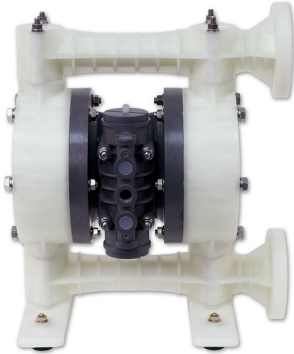


# EXPLODED VIEW & PARTS LISTING

## Air Operated Double Diaphragm Pump

Model: NDP-20BPU-PP Flange  
Part # 854112-U



### To Purchase:

☎ [800-990-7867](tel:800-990-7867)

✉ [sales@yamadapump.com](mailto:sales@yamadapump.com)

📍 [Find My Rep](#)

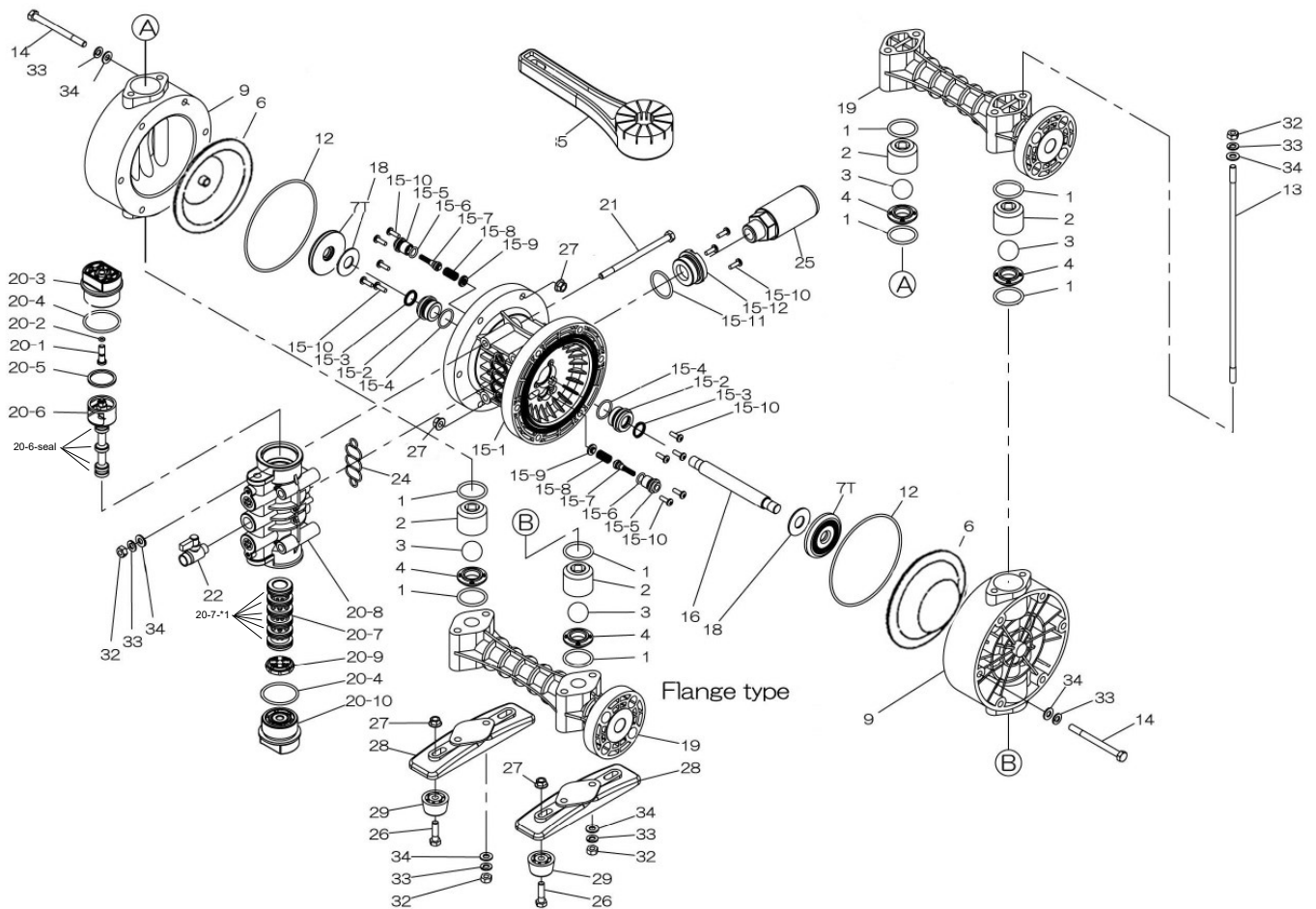
### More Information:

▶ YouTube: [@yamadapump](#)

🌐 [yamadapump.com](http://yamadapump.com)

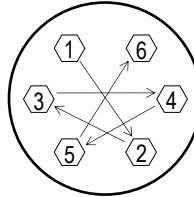
[Data Sheets](#) | [CAD Drawings](#) | [Manuals](#)  
[Literature](#) | [BOM](#) | [Performance Curves](#)

### Trial Program



Air Operated Double Diaphragm Pump

REF. No.	PART No.	DESCRIPTION	QTY.
1	643036	O-RING	8
2	771216	BALL GUIDE	4
3	770736	BALL	4
4	780137	VALVE SEAT	4
6	832549	DIAPHRAGM	2
7T	772562	CENTER DISK (AIR SIDE)	2
9	780134	OUT CHAMBER	2
12	640151	O-RING	2
13	710122	TIE ROD	4
14	621163	BOLT	12
<b>15</b>	<b>804603</b>	<b>CENTER BODY ASSY.</b>	<b>1</b>
15-1	772928	BODY	2
15-2	780326	THROAT BEARING	2
15-3	685414	V-PACKING	2
15-4	685276	O-RING	2
15-5	772932	VALVE SEAT	2
15-6	640009	O-RING	2
15-7	802360	PILOT VALVE ASSY.	2
15-8	708666	SPRING	2
15-9	772948	SPRING SEAT	2
15-10	686030	TAPPING SCREW	13
15-11	640132	O-RING	1
15-12	772933	BUSHING	1
16	714674	CENTER ROD	1
18	771054	CUSHION	1
19	780208	MANIFOLD (FLANGE)	2
<b>20</b>	<b>804608</b>	<b>AIR VALVE ASSY.</b>	<b>1</b>
20-1	772991	RESET BUTTON	1
20-2	640002	O-RING	1
20-3	772946	CAP A	1
20-4	640043	O-RING	2
20-5	771241	PACKING	1
20-6	802400	C-SPOOL ASSY.	1
20-6-seal	771053	SEAL RING	5
20-7	804609	SLEEVE ASSY.	1
20-7-*1	686029	O-RING (SLEEVE O.D.)	6
20-8	832903	VALVE BODY	1
20-9	771914	CUSHION	1
20-10	772947	CAP B	1
21	686031	BOLT	4
22	686968	BALL VALVE	1
24	772848	GASKET	1
25	804697	SILENCER	1
26	621151	BOLT	4
27	686032	FLANGED NUT	16
28	771219	PUMP BASE	2
29	770551	FOOT RUBBER	4
32	683635	NUT	12
33	681300	SPRING WASHER	24
34	631329	FLAT WASHER	24
35	771244	TOOL	2
KIT	K20-PU-PP	LIQUID SIDE KIT	
KIT	K225-AP	AIR MOTOR KIT	



[CLICK HERE FOR TORQUE](#)



**General Tools:**

- Socket wrenches - 10mm, 12mm, 13mm, 17mm, 22mm
- Hexagonal box wrench - 5mm
- Open-end wrenches - 12mm, 13mm, 22mm
- Adjustable angle wrenches
- Phillips head screw driver

**Special Tools:**

- Disk remover (771244) (included)
- Sleeve remover (713148) (sold separately)

**Miscellaneous:**

- Urea grease grade (NLGI) No. 2 for Center Rod (Ref#16)

[CLICK HERE FOR MAINTENANCE MANUAL](#)

**Customer Notes**

Model #: \_\_\_\_\_

Description: \_\_\_\_\_

Serial #: \_\_\_\_\_

Date Installed: \_\_\_\_\_

Department Location: \_\_\_\_\_

Tag/Project: \_\_\_\_\_