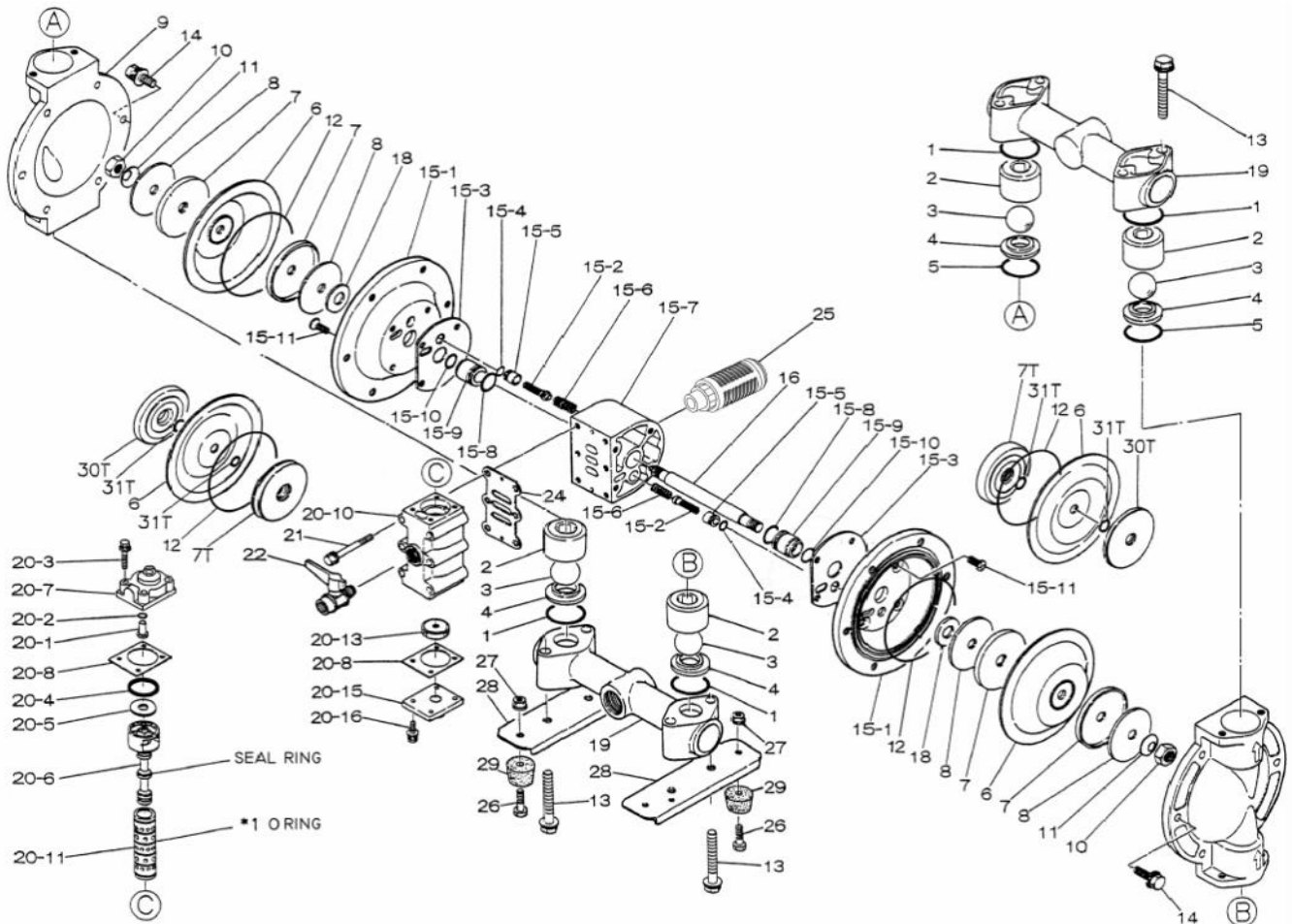


EXPLODED VIEW & PARTS LISTING

Air Operated Double Diaphragm Pump

Model: NDP-20BAH-UL

Part # 852098-UL



Air Operated Double Diaphragm Pump



Reference	No.	Description	Q'ty	Part No.
	1	O-ring	4	643036
	2	Valve Stopper	4	711700
	3	Ball	4	770736
	4	Valve Seat	4	590086
	5	O-ring	2	771131
	6	Diaphragm	2	771362
	7	Center Disk	-	716225
	7T	N/A	-	-
	8	Plain Washer	4	716226
	9	Out Chamber	2	711686
	10	Nut	2	682263
	11	Coned Disk Spring	2	682730
	12	O-ring	2	640151
	13	Bolt	8	611159
13 washer		Wave Washer	8	631916
	14	Bolt	12	611151
14 washer		Wave Washer	12	631916
	15	Body Assembly	1	803247
	16	Center Rod	1	709163
	18	Cushion	2	771054
	19	Manifold	2	831280
	20	Valve Body Assembly	1	802362
	21	Bolt	6	682265
	22	Ball Valve	1	686019
	24	Gasket	1	771056
	25	Silencer	1	804697
	26	Bolt	4	611148
	27	Nut with Flange	4	682276
	28	Pump Base	2	709157
	29	Cushion	4	770551
	30T	N/A	-	-
	31T	N/A	-	-

Body Assembly - 803247

Reference	No.	Description	Q'ty	Part No.
	15-1	Air Chamber	2	715937
	15-2	Pilot Valve Assy.	2	802360
	15-3	Gasket	2	771057
	15-4	O-ring	2	640009
	15-5	Valve Seat	2	771945
	15-6	Spring	2	708666
	15-7	Body	1	709812
	15-8	O-ring	2	685276
	15-9	Throat Bearing	2	772703
	15-10	Packing	2	685414
	15-11	Flat Head Bolt	8	682486

Repair Kits

K20-MH-UL Liquid Side Repair Kit

1	O-ring	4	643036
3	Ball	4	770736
5	O-ring	2	771131
6	Diaphragm	2	771362
12	O-ring	2	640151
31	O-ring	4	643013

K225-AM Air Side Repair Kit

18	Cushion	2	771054
24	Gasket	1	771056
15-2	Pilot Valve Assy.	2	802360
15-3	Gasket	2	771057
15-4	O-ring	2	640009
15-5	Valve Seat	2	771945
15-6	Spring	2	708666
15-8	O-ring	2	685276
15-9	Throat Bearing	2	772703
15-10	Packing	2	685414
20-2	O-ring	1	640005
20-4	Packing	1	771241
20-6-seal	Seal Ring	5	771053
20-8	Gasket	2	771240
20-11-*1	O-ring	6	771080
20-13	Cushion	1	771914

Air Valve Body Assembly - 802362

Reference	No.	Description	Q'ty	Part No.
	20-1	Reset Button	1	709161
	20-2	O-ring	1	640005
	20-3	Bolt	4	682704
	20-4	Packing	1	771241
	20-5	Plain Washer	1	715961
	20-6	C Spool Valve Assy.	1	802400
20-6-seal		Seal Ring	5	771053
	20-7	Cap	1	710221
	20-8	Gasket	2	771240
	20-10	Valve Body	1	711639
	20-11	Sleeve Assembly	1	803931
20-11-*1		O-ring	6	771080
	20-13	Cushion	1	771914
	20-15	Cap	1	709305
	20-16	Bolt	4	682262