

# EXPLODED VIEW & PARTS LISTING

## Air Operated Double Diaphragm Pump

Model: NDP-50BP-PP  
Polypropylene Series



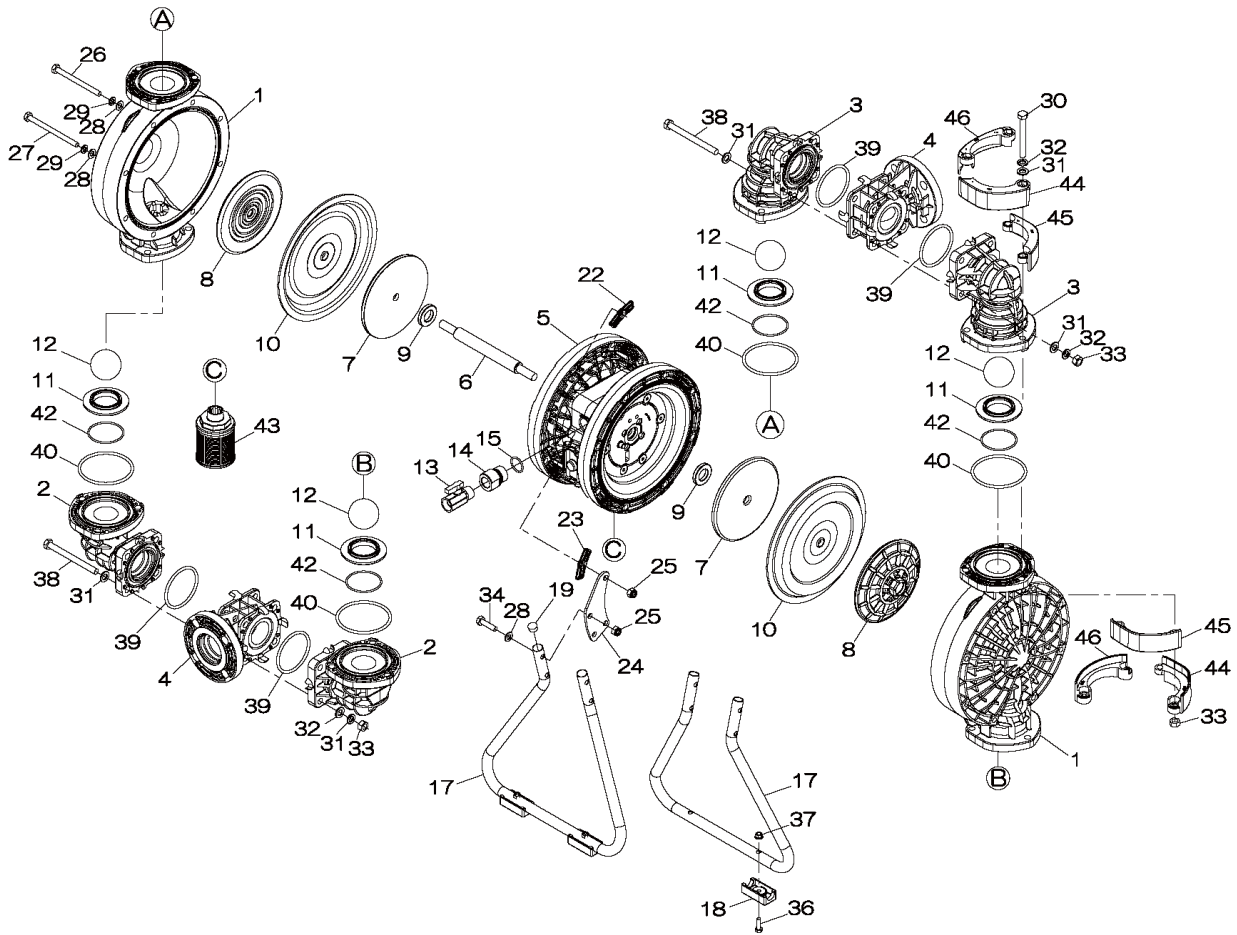
### To Purchase:

- ☎ 800-990-7867
- ✉ sales@yamadapump.com
- 📍 Find My Rep

### More Information:

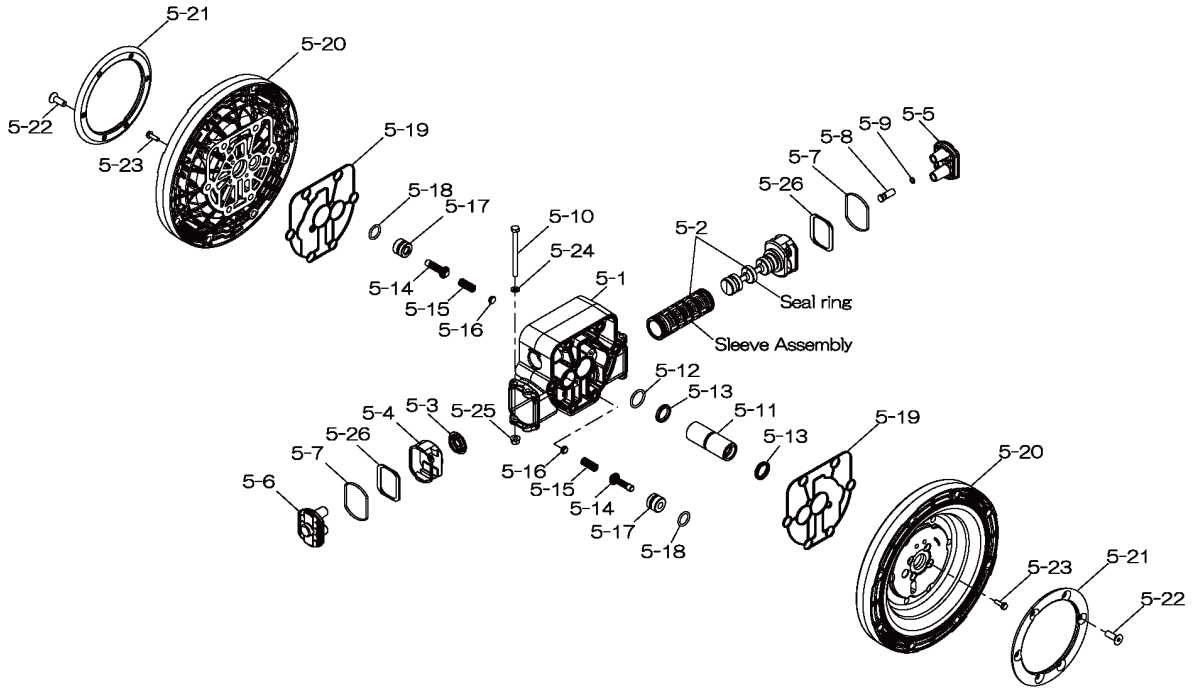
- ▶ YouTube: @yamadapump
- 🌐 yamadapump.com
- Data Sheets | CAD Drawings | Manuals Literature | BOM | Performance Curves*

### Trial Program



Air Operated Double Diaphragm Pump

805073 Center Body Assembly



## Air Operated Double Diaphragm Pump

	NDP-50BPC-PP	NDP-50BPN-PP	NDP-50BPE-PP	NDP-50BPV-PP	NDP-50BPH-PP	NDP-50BPS-PP			
REF. No.	PARTS No.	PARTS No.	PARTS No.	PARTS No.	PARTS No.	PARTS No.	DESCRIPTION	QTY.	REORDER
1	780148	780148	780148	780148	780148	780148	OUT CHAMBER 50PP-2	2	
2	780245	780245	780245	780245	780245	780245	IN MANIFOLD 50PP	2	
3	780151	780151	780151	780151	780151	780151	OUT MANIFOLD 50PP-2	2	
4	780249	780249	780249	780249	780249	780249	CENTER MANIFOLD 50PP	2	
<b>5</b>	<b>805073</b>	<b>805073</b>	<b>805073</b>	<b>805073</b>	<b>805073</b>	<b>805073</b>	<b>CENTER BODY ASSY 50-PP</b>	<b>1</b>	
5- 1	833121	833121	833121	833121	833121	833121	VALVE BODY ASSY (NPT)	1	
5- 2	805063	805063	805063	805063	805063	805063	C SPOOL ASSY (NDP-P)	1	
5- 3	771923	771923	771923	771923	771923	771923	CUSHION	1	
5- 4	771735	771735	771735	771735	771735	771735	SPRING RETAINER 40/50/	1	
5- 5	773249	773249	773249	773249	773249	773249	CAP A	1	
5- 6	773250	773250	773250	773250	773250	773250	CAP B	1	
5- 7	773252	773252	773252	773252	773252	773252	GASKET B	2	
5- 8	773259	773259	773259	773259	773259	773259	RESET BUTTON	1	
5- 9	640005	640005	640005	640005	640005	640005	O RING	1	
5-10	621167	621167	621167	621167	621167	621167	BOLT	4	
5-11	773253	773253	773253	773253	773253	773253	THROAT BEARING	1	
5-12	640027	640027	640027	640027	640027	640027	O RING	1	
5-13	685444	685444	685444	685444	685444	685444	V-PACKING	2	
5-14	832162	832162	832162	832162	832162	832162	PILOT VALVE ASSY	2	
5-15	711937	711937	711937	711937	711937	711937	PILOT VALVE SPRING	2	
5-16	773257	773257	773257	773257	773257	773257	SPRING SEAT	2	
5-17	773254	773254	773254	773254	773254	773254	VALVE SEAT	2	
5-18	640020	640020	640020	640020	640020	640020	O RING	2	
5-19	773251	773251	773251	773251	773251	773251	GASKET A	2	
5-20	780294	780294	780294	780294	780294	780294	AIR CHAMBER	2	
5-21	717073	717073	717073	717073	717073	717073	REINFORCING PLATE	2	
5-22	686748	686748	686748	686748	686748	686748	BOLT HEX.SOCKET	12	
5-23	686747	686747	686747	686747	686747	686747	TAPPING SCREW	8	
5-24	631173	631173	631173	631173	631173	631173	WASHER	4	
5-25	686783	686783	686783	686783	686783	686783	CUP NUT	4	
5-26	773334	773334	773334	773334	773334	773334	SPACER	2	
5-27	773258	773258	773258	773258	773258	773258	UNION	1	
5-28	640131	640131	640131	640131	640131	640131	O RING	1	
6	711900	711900	711900	711900	711900	711900	CENTER ROD 40/50	1	
7	711905	711905	711905	711905	711905	711905	CENTER DISK 50SS	2	
8	771727	771727	771727	771727	771727	771727	CENTER DISK 50PP-R	2	
9	770582	770582	770582	770582	770582	770582	CUSHION 40/50/80	2	
10	771855	771702	771856	771800	771703	771976	DIAPHRAGM 50C	2	
11	772097	772097	772097	772097	772097	772097	VALVE SEAT 50PP-2	4	
12	770627	770630	770633	770636	773143	773173	BALL 50C -63MM NEOPRE	4	
13	684322	684322	684322	684322	684322	684322	BALL VALVE	1	
14	773258	773258	773258	773258	773258	773258	UNION	1	
15	640131	640131	640131	640131	640131	640131	O RING	1	
17	716885	716885	716885	716885	716885	716885	STAND 50-PP	2	
18	771865	771865	771865	771865	771865	771865	FOOT RUBBER	4	
19	683641	683641	683641	683641	683641	683641	CAP 40/50/80PP STAND	4	
22	716883	716883	716883	716883	716883	716883	SUPPORTING PLATE A 50-PP	8	

Air Operated Double Diaphragm Pump

	NDP-50BPC-PP	NDP-50BPN-PP	NDP-50BPE-PP	NDP-50BPV-PP	NDP-50BPH-PP	NDP-50BPS-PP			
REF. No.	PARTS No.	PARTS No.	PARTS No.	PARTS No.	PARTS No.	PARTS No.	DESCRIPTION	QTY.	REORDER
23	854836	854837	854838	854839	854841	854842	SUPPORTING PLATE B 50-PP	8	
24	716884	716884	716884	716884	716884	716884	CONNECTING PLATE 50-PP	4	
25	716905	716905	716905	716905	716905	716905	LOCK NUT	16	
26	685185	685185	685185	685185	685185	685185	BOLT	8	
27	686696	686696	686696	686696	686696	686696	BOLT	8	
28	686697	686697	686697	686697	686697	686697	WASHER FLAT	24	
29	631330	631330	631330	631330	631330	631330	SPRING WASHER	16	
30	680257	680257	680257	680257	680257	680257	BOLT	12	
31	621213	621213	621213	621213	621213	621213	WASHER M12 SS FLAT	28	
32	631331	631331	631331	631331	631331	631331	SPRING WASHER	20	
33	680607	680607	680607	680607	680607	680607	NUT	20	
34	628014	628014	628014	628014	628014	628014	BOLT	8	
36	621179	621179	621179	621179	621179	621179	BOLT	4	
37	621149	621149	621149	621149	621149	621149	NUT W/ FLANGE	4	
38	683837	683837	683837	683837	683837	683837	BOLT	8	
39	684592	684592	684592	684592	684592	684592	O RING 84.3MM X 5.7MM	4	
40	640064	640064	684121	642064	640064	684121	O RING 104.3MM X 5.7MM	4	
42	640069	640069	684122	642069	640069	684122	O RING 69MM X 3MM B70	4	
43	640139	640139	685448	642139	640139	685448	SILENCER ASSY.	1	
44	804764	804764	804764	804764	804764	804764	PROTECTOR A 50PP&PVDF	8	
45	771786	771786	771786	771786	771786	771786	PROTECTOR B 50PP&PVDF	8	
46	771787	771787	771787	771787	771787	771787	PROTECTOR C 50PP&PVDF	8	
KIT	771788	771788	771788	771788	771788	771788	LIQUID SIDE		
KIT	K50-PC	K50-PN	K50-PE	K50-PV	K50-PH	K50-PS	AIR MOTOR		

General Tools:

- Socket wrench - 13mm, 17mm, 19mm
- Hexagonal box wrench - 6mm
- Small crowbars - 2 (B\_C, B\_N, B\_E, B\_V)
- Open-end wrenches - 19mm, 24mm
- Plastic hammer, Phillips head screw driver, adjustable angle wrenches, needle nose Pliers

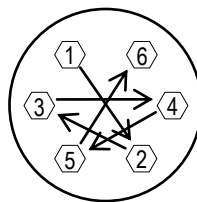
Special Tools (sold separately):

- PP wrench (771866) to remove center disk
- Sleeve remover (713180) to remove sleeve

Miscellaneous:

- Assembly Oil—turbine oil none additional class 1 (equivalent to ISA VGA32 grade)
- Nuts - M16 x 1.5
- Thread locker
- Urea grease grade (NLGI) No. 2

Torque Requirements:



Tightening torque for center rod and out chambers.

Center Rod 36 ft-lbf {50 N-m}  
Out Chambers 26 ft-lbf {35 N-m}

Tightening torque for manifold retainer bolts.

BP\_PP 18 ft-lbf {25 N-m}

Customer Notes

Model #: \_\_\_\_\_  
 Description: \_\_\_\_\_  
 Serial #: \_\_\_\_\_  
 Date Installed: \_\_\_\_\_  
 Department Location: \_\_\_\_\_  
 Tag/Project: \_\_\_\_\_