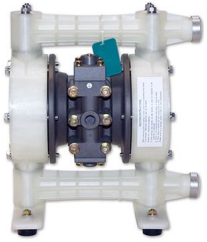


EXPLODED VIEW & PARTS LISTING

Air Operated Double Diaphragm Pump

Model: NDP-25BP[x]
Polypropylene Series
(with metal center body)



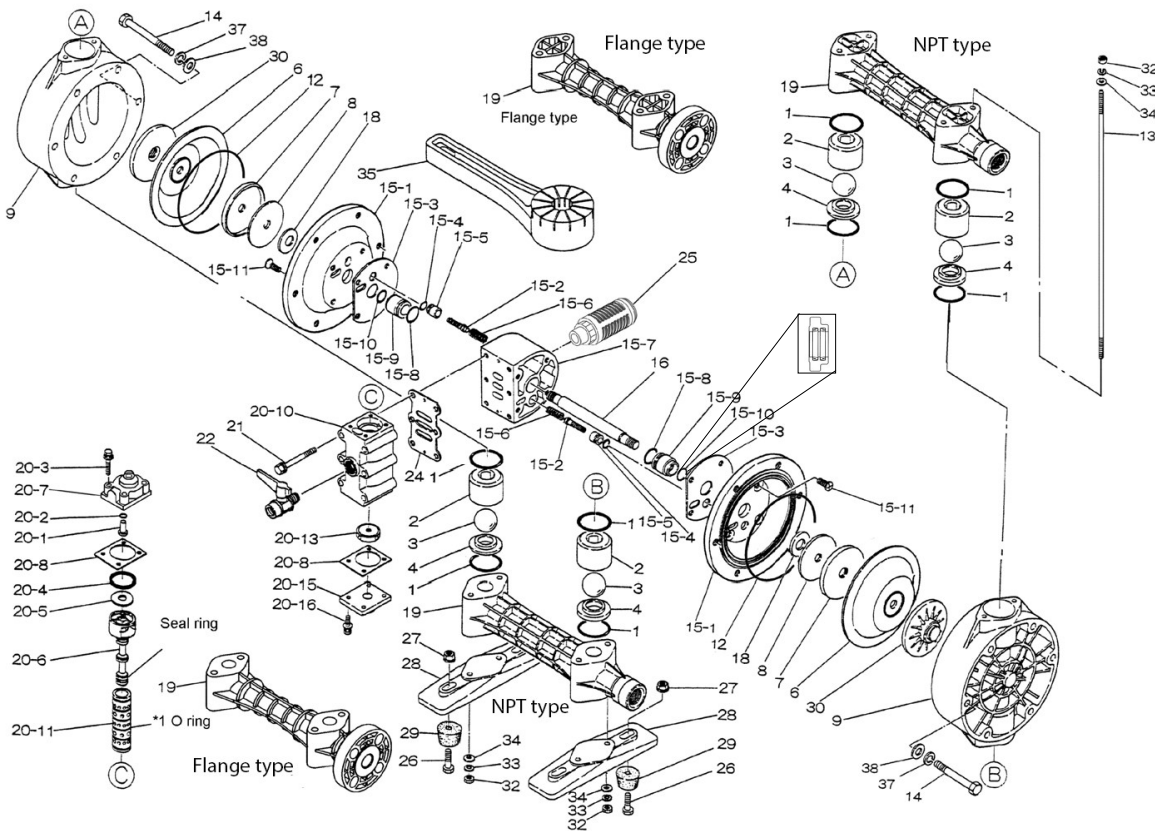
To Purchase:

- ☎ 800-990-7867
- ✉ sales@yamadapump.com
- 📍 Find My Rep

More Information:

- ▶ YouTube: @yamadapump
- 🌐 yamadapump.com
- Data Sheets | CAD Drawings | Manuals Literature | BOM | Performance Curves

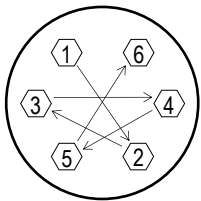
Trial Program



REF. NO.	PART NO.	PART NO.	PART NO.	PART NO.	PART NO.	PART NO.	DESCRIPTION	QTY	REORDER
NPT	851671	852385	852386	852070	852704	852387	** NPT PUMPS **		
Flange	853844	853845	853846	853849	853850	853847	** FLG PUMPS **		
1	640042	640042	684119	640042	684119	642042	O-RING	8	
2	771231	771231	771231	771231	771231	771231	BALL GUIDE	4	
3	770556	770581	770590	773127	773171	770599	BALL	4	
4	780138	780138	780138	780138	780138	780138	VALVE SEAT	4	
6	772961	772962	772963	771363	771974	772964	DIAPHRAGM	2	
7	716258	716258	716258	716258	716258	716258	CENTER DISK (AIR SIDE)	2	
8	716259	716259	716259	716259	716259	716259	WASHER (AIR SIDE)	2	
9	780135	780135	780135	780135	780135	780135	OUT CHAMBER	2	
12	-	-	-	640154	640154	-	O-RING	2	
13	710207	710207	710207	710207	710207	710207	TIE ROD	4	
14	621189	621189	621189	621189	621189	621189	BOLT	12	
15	804880	804880	804880	804880	804880	804880	CENTER BODY ASSY.	1	
15- 1	715940	715940	715940	715940	715940	715940	AIR CHAMBER	2	
15- 2	802360	802360	802360	802360	802360	802360	PILOT VALVE ASSY	2	
15- 3	771057	771057	771057	771057	771057	771057	GASKET	2	
15- 4	640009	640009	640009	640009	640009	640009	O-RING	2	
15- 5	771945	771945	771945	771945	771945	771945	PILOT VALVE SEAT	2	
15- 6	708666	708666	708666	708666	708666	708666	SPRING	2	
15- 7	711503	711503	711503	711503	711503	711503	BODY	1	
15- 8	685276	685276	685276	685276	685276	685276	O-RING	2	
15- 9	780324	780324	780324	780324	780324	780324	THROAT BEARING	2	
15-10	685414	685414	685414	685414	685414	685414	V-PACKING	2	
15-11	682486	682486	682486	682486	682486	682486	BOLT W/ WASH	8	
16	710271	710271	710271	710271	710271	710271	CENTER ROD	1	
18	771054	771054	771054	771054	771054	771054	CUSHION	2	
19	780012	780012	780012	780012	780012	780012	MANIFOLD - NPT	2	
19	780210	780210	780210	780210	780210	780210	MANIFOLD - FLG	2	
20	802809	802809	802809	802809	802809	802809	AIR VALVE ASSY.	1	
20- 1	709161	709161	709161	709161	709161	709161	RESET BUTTON	1	
20- 2	640005	640005	640005	640005	640005	640005	O-RING	1	
20- 3	682704	682704	682704	682704	682704	682704	BOLT W/WASHER	4	
20- 4	771241	771241	771241	771241	771241	771241	PACKING	1	
20- 5	715961	715961	715961	715961	715961	715961	WASHER	1	
20- 6	802400	802400	802400	802400	802400	802400	C SPOOL ASSY	1	
20-6 seal	771053	771053	771053	771053	771053	771053	SEAL RING	5	
20- 7	711219	711219	711219	711219	711219	711219	CAP A	1	
20- 8	771240	771240	771240	771240	771240	771240	GASKET	2	
20-10	711640	711640	711640	711640	711640	711640	VALVE BODY	1	
20-11	803931	803931	803931	803931	803931	803931	SLEEVE ASSY	1	
20-11-*1	771080	771080	771080	771080	771080	771080	O-RING	6	
20-13	771914	771914	771914	771914	771914	771914	CUSHION	1	
20-15	711212	711212	711212	711212	711212	711212	CAP B	1	
20-16	682262	682262	682262	682262	682262	682262	BOLT W/WASHER	4	
21	682265	682265	682265	682265	682265	682265	BOLT W/WASHER	6	
22	686970	686970	686970	686970	686970	686970	BALL VALVE	1	
24	771056	771056	771056	771056	771056	771056	GASKET	1	
25	804697	804697	804697	804697	804697	804697	MUFFLER	1	
26	611153	611153	611153	611153	611153	611153	BOLT	4	

Air Operated Double Diaphragm Pump

REF. NO.	PART NO.	PART NO.	PART NO.	PART NO.	PART NO.	PART NO.	DESCRIPTION	QTY	REORDER
NPT	851671	852385	852386	852070	852704	852387	** NPT PUMPS **		
Flange	853844	853845	853846	853849	853850	853847	** FLG PUMPS **		
27	682276	682276	682276	682276	682276	682276	NUT W/ FLANGE	4	
28	771235	771235	771235	771235	771235	771235	BASE	2	
29	770551	770551	770551	770551	770551	770551	FOOT RUBBER	4	
30	780125	780125	780125	780125	780125	780125	CENTER DISK (LIQUID SIDE)	2	
32	687229	687229	687229	687229	687229	687229	NUT	8	
33	681300	681300	681300	681300	681300	681300	SPRING WASHER	8	
34	631329	631329	631329	631329	631329	631329	FLAT WASHER	8	
35	771244	771244	771244	771244	771244	771244	TOOL	2	
37	680257	680257	680257	680257	680257	680257	SPRING WASHER	12	
38	631330	631330	631330	631330	631330	631330	FLAT WASHER	12	
KIT	ORDER PARTS INDIVIDUALLY						LIQUID END KIT		
KIT	K225-AM						AIR MOTOR KIT		



Tightening torque for center rod and out chambers.

- Center Rod 29 ft-lbf {40 N-m}
- Out Chambers C/N/E/V 8 ft-lbf {10 N-m}
- Out Chambers H/S 15 ft-lbf {20 N-m}

Tightening torque for manifold retainer bolts.

- BPC/E/H/N/S/V 8 ft-lbf {10 N-m}

General Tools:

- Socket wrenches - 10mm, 12mm, 13mm, 17mm, 22mm
- Hexagonal box wrench - 5mm
- Open-end wrenches - 13mm

Special Tools:

- Disk remover (771244). (included)
- Sleeve remover (713148). (sold separately)

Miscellaneous:

- Assembly Oil - turbine oil class 1 (equivalent to ISO VG32 grade)
- Nuts - M14 x 1.5
- Urea grease grade (NLGI) No. 2
- Lubricants equivalent to (Loctite Anti-Seize 767)

Customer Notes	
Model #:	_____
Description:	_____
Serial #:	_____
Date Installed:	_____
Department Location:	_____
Tag/Project:	_____