

EXPLODED VIEW & PARTS LISTING

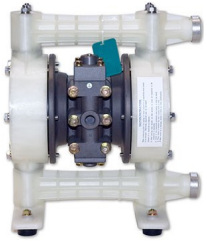
Air Operated Double Diaphragm Pump

Model: NDP-25BPT

Model#: 851672 (NPT)

Model#: 853848 (Flange)

(with metal center body)



To Purchase:

☎ 800-990-7867

✉ sales@yamadapump.com

📍 Find My Rep

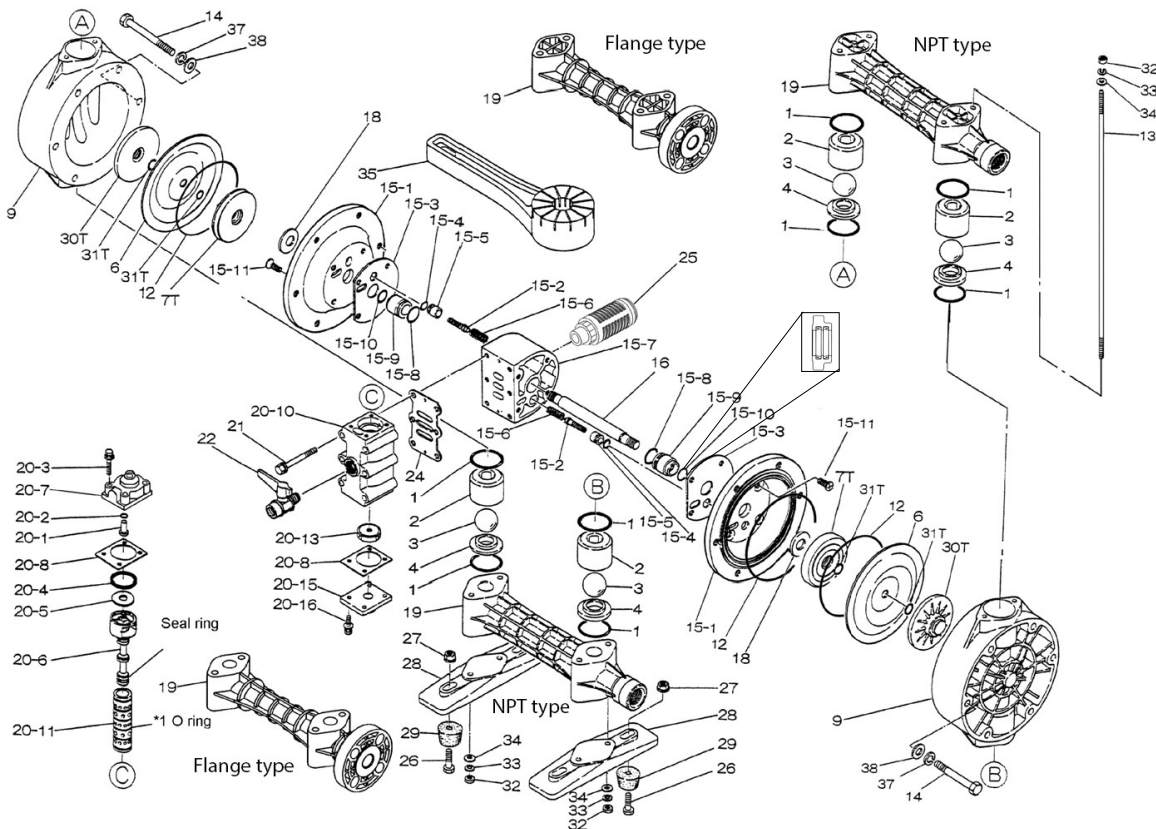
More Information:

▶ YouTube: @yamadapump

🌐 yamadapump.com

Data Sheets | CAD Drawings | Manuals Literature | BOM | Performance Curves

Trial Program



EXPLODED VIEW & PARTS LISTING

Model: NDP-25BPT
Model#: 851672 (NPT)
Model#: 853848 (Flange)
(with metal center body)



Air Operated Double Diaphragm Pump

REF. NO.	PART NO.	DESCRIPTION	QTY	REORDER
NPT	851672	** NPT PUMPS **		
Flange	853848	** FLG PUMPS **		
1	643042	O-RING	8	
2	771231	BALL GUIDE	4	
3	770691	BALL 25T	4	
4	780138	VALVE SEAT	4	
6	771110	DIAPHRAGM	2	
7T	709459	CENTER DISK 25T (AIR SIDE)	2	
9	780135	OUT CHAMBER	2	
12	640154	O-RING	2	
13	710207	TIE ROD	4	
14	621189	BOLT	12	
15	804880	CENTER BODY ASSY.	1	
15- 1	715940	AIR CHAMBER	2	
15- 2	802360	PILOT VALVE ASSY.	2	
15- 3	771057	GASKET	2	
15- 4	640009	O-RING	2	
15- 5	771945	PILOT VALVE SEAT	2	
15- 6	708666	SPRING	2	
15- 7	711503	BODY	1	
15- 8	685276	O-RING	2	
15- 9	780324	THROAT BEARING	2	
15-10	685414	V-PACKING	2	
15-11	682486	BOLT W/WASHER	8	
16	710271	CENTER ROD	1	
18	771054	CUSHION	2	
19	780012	MANIFOLD - NPT	2	
19	780210	MANIFOLD- FLG	2	
20	802809	AIR VALVE ASSY.	1	
20- 1	709161	RESET BUTTON	1	
20- 2	640005	O-RING	1	
20- 3	682704	BOLT ZINC W/ WASHER	4	
20- 4	771241	PACKING	1	
20- 5	715961	WASHER	1	
20- 6	802400	C SPOOL ASSY	1	
20-6 seal	771053	SEAL RING	5	
20- 7	711219	CAP A	1	
20- 8	771240	GASKET	2	
20-10	711640	VALVE BODY 20/25PP	1	
20-11	803931	SLEEVE ASSY	1	
20-11-*1	771080	O-RING	6	
20-13	771914	CUSHION	1	
20-15	711212	CAP B	1	
20-16	682262	BOLT W/ WASHER	4	

REF. NO.	PART NO.	DESCRIPTION	QTY	REORDER
NPT	851672	** NPT PUMPS **		
Flange	853848	** FLG PUMPS **		
21	682265	BOLT W/ WASHER	6	
22	686970	BALL VALVE 3/8	1	
24	771056	GASKET	1	
25	804697	MUFFLER	1	
26	611153	BOLT	4	
27	682276	NUT W/ FLANGE	4	
28	771235	BASE	2	
29	770551	FOOT RUBBER	4	
30T	780126	CENTER DISK 25PP-T	2	
31T	643013	O-RING	4	
32	687229	NUT	8	
33	681300	SPRING WASHER	8	
34	631329	FLAT WASHER	8	
35	771244	TOOL	2	
37	680257	SPRING WASHER	12	
38	631330	FLAT WASHER	12	
KIT	ORDER PARTS INDIVIDUALLY	LIQUID END KIT		
KIT	K225-AM	AIR MOTOR KIT		

General Tools:

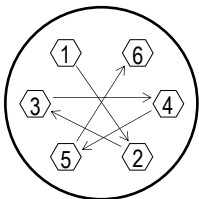
- Socket wrenches - 10mm, 12mm, 13mm, 17mm, 22mm
- Hexagonal box wrench - 5mm
- Open-end wrenches - 13mm

Special Tools:

- Disk remover (771244). (included)
- Sleeve remover (713148). (sold separately)

Miscellaneous:

- Assembly Oil - turbine oil class 1 (equivalent to ISO VG32 grade)
- Nuts - M14 x 1.5
- Urea grease grade (NLGI) No. 2
- Lubricants equivalent to (Loctite Anti-Seize 767)



Tightening torque for center rod and out chambers.

Center Rod 29 ft-lbf {40 N-m}
 Out Chambers 15 ft-lbf {20 N-m}

Tightening torque for manifold retainer bolts.

BPT 28 ft-lbf {35 N-m}

Tightening torque for manifold retainer nuts.

BPT 10 ft-lbf {12 N-m}

Customer Notes

Model #: _____
 Description: _____
 Serial #: _____
 Date Installed: _____
 Department Location: _____
 Tag/Project: _____