

EXPLODED VIEW & PARTS LISTING

Air Operated Double Diaphragm Pump

Model: NDP-25BP[x]-PP
Polypropylene Series



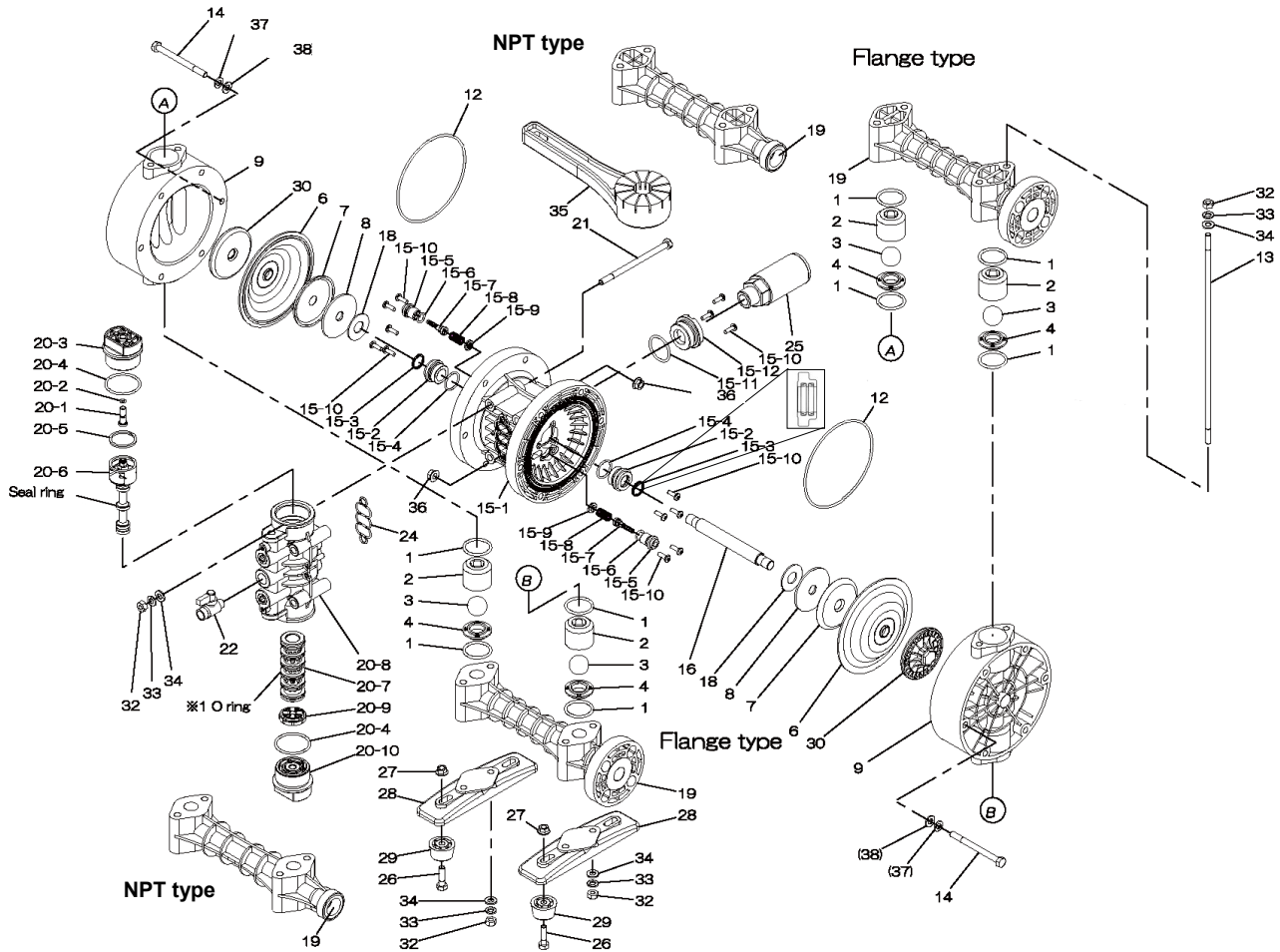
To Purchase:

- ☎ 800-990-7867
- ✉ sales@yamadapump.com
- 📍 Find My Rep

More Information:

- ▶ YouTube: @yamadapump
- 🌐 yamadapump.com
- Data Sheets | CAD Drawings | Manuals Literature | BOM | Performance Curves

Trial Program



Air Operated Double Diaphragm Pump

| NDP-25BPC-PP NDP-25BPN-PP NDP-25BPE-PP NDP-25BPH-PP NDP-25BPS-PP NDP-25BPV-PP | | | | | | | | | |
|---|-----------|-----------|-----------|-----------|-----------|-----------|---------------------------|------|---------|
| NPT | 854171 | 854172 | 854173 | 854176 | 854177 | 854174 | ** NPT PUMPS ** | | |
| Flange | 854185 | 854186 | 854187 | 854190 | 854191 | 854188 | ** FLG PUMPS ** | | |
| REF. No. | PARTS No. | PARTS No. | PARTS No. | PARTS No. | PARTS No. | PARTS No. | DESCRIPTION | QTY. | REORDER |
| 1 | 640042 | 640042 | 684119 | 640042 | 684119 | 642042 | O-RING | 8 | |
| 2 | 771231 | 771231 | 771231 | 771231 | 771231 | 771231 | BALL GUIDE | 4 | |
| 3 | 770556 | 770581 | 770590 | 773127 | 773171 | 770599 | BALL | 4 | |
| 4 | 780138 | 780138 | 780138 | 780138 | 780138 | 780138 | VALVE SEAT | 4 | |
| 6 | 772961 | 772962 | 772963 | 771363 | 771974 | 772964 | DIAPHRAGM | 2 | |
| 7 | 716258 | 716258 | 716258 | 716258 | 716258 | 716258 | CENTER DISK (AIR SIDE) | 2 | |
| 8 | 716259 | 716259 | 716259 | 716259 | 716259 | 716259 | WASHER (AIR SIDE) | 2 | |
| 9 | 780135 | 780135 | 780135 | 780135 | 780135 | 780135 | OUT CHAMBER | 2 | |
| 12 | - | - | - | 640154 | 640154 | - | O-RING | 2 | |
| 13 | 710207 | 710207 | 710207 | 710207 | 710207 | 710207 | TIE ROD | 4 | |
| 14 | 683541 | 683541 | 683541 | 683541 | 683541 | 683541 | BOLT | 12 | |
| 15 | 804604 | 804604 | 804604 | 804604 | 804604 | 804604 | BODY ASSY. | 1 | |
| 15-1 | 772929 | 772929 | 772929 | 772929 | 772929 | 772929 | BODY | 1 | |
| 15-2 | 780326 | 780326 | 780326 | 780326 | 780326 | 780326 | THROAT BEARING | 2 | |
| 15-3 | 685414 | 685414 | 685414 | 685414 | 685414 | 685414 | V-PACKING | 2 | |
| 15-4 | 685276 | 685276 | 685276 | 685276 | 685276 | 685276 | O-RING | 2 | |
| 15-5 | 772932 | 772932 | 772932 | 772932 | 772932 | 772932 | VALVE SEAT | 2 | |
| 15-6 | 640009 | 640009 | 640009 | 640009 | 640009 | 640009 | O-RING | 2 | |
| 15-7 | 802360 | 802360 | 802360 | 802360 | 802360 | 802360 | PILOT VALVE ASSY. | 2 | |
| 15-8 | 708666 | 708666 | 708666 | 708666 | 708666 | 708666 | SPRING | 2 | |
| 15-9 | 772948 | 772948 | 772948 | 772948 | 772948 | 772948 | SPRING SEAT | 2 | |
| 15-10 | 686030 | 686030 | 686030 | 686030 | 686030 | 686030 | TAPPING SCREW | 13 | |
| 15-11 | 640132 | 640132 | 640132 | 640132 | 640132 | 640132 | O-RING | 1 | |
| 15-12 | 772933 | 772933 | 772933 | 772933 | 772933 | 772933 | BUSHING | 1 | |
| 16 | 710271 | 710271 | 710271 | 710271 | 710271 | 710271 | CENTER ROD | 1 | |
| 18 | 771054 | 771054 | 771054 | 771054 | 771054 | 771054 | CUSHION | 2 | |
| 19 | 780012 | 780012 | 780012 | 780012 | 780012 | 780012 | MANIFOLD - NPT | 2 | |
| 19 | 780210 | 780210 | 780210 | 780210 | 780210 | 780210 | MANIFOLD - FLG | 2 | |
| 20 | 804608 | 804608 | 804608 | 804608 | 804608 | 804608 | VALVE BODY ASSY. | 1 | |
| 20-1 | 772991 | 772991 | 772991 | 772991 | 772991 | 772991 | RESET BUTTON | 1 | |
| 20-2 | 640002 | 640002 | 640002 | 640002 | 640002 | 640002 | O-RING | 1 | |
| 20-3 | 772946 | 772946 | 772946 | 772946 | 772946 | 772946 | CAP A | 1 | |
| 20-4 | 640043 | 640043 | 640043 | 640043 | 640043 | 640043 | O-RING | 2 | |
| 20-5 | 771241 | 771241 | 771241 | 771241 | 771241 | 771241 | PACKING | 1 | |
| 20-6 | 802400 | 802400 | 802400 | 802400 | 802400 | 802400 | C-SPOOL ASSY. | 1 | |
| 20-6-seal | 771053 | 771053 | 771053 | 771053 | 771053 | 771053 | SEAL RING | 5 | |
| 20-7 | 804609 | 804609 | 804609 | 804609 | 804609 | 804609 | SLEEVE ASSY | 1 | |
| 20-7-*1 | 686029 | 686029 | 686029 | 686029 | 686029 | 686029 | O-RING | 6 | |
| 20-8 | 832903 | 832903 | 832903 | 832903 | 832903 | 832903 | VALVE BODY | 1 | |
| 20-9 | 771914 | 771914 | 771914 | 771914 | 771914 | 771914 | CUSHION | 1 | |
| 20-10 | 772947 | 772947 | 772947 | 772947 | 772947 | 772947 | CAP B | 1 | |
| 21 | 686031 | 686031 | 686031 | 686031 | 686031 | 686031 | BOLT | 4 | |
| 22 | 686970 | 686970 | 686970 | 686970 | 686970 | 686970 | BALL VALVE | 1 | |
| 24 | 772848 | 772848 | 772848 | 772848 | 772848 | 772848 | GASKET | 1 | |
| 25 | 804697 | 804697 | 804697 | 804697 | 804697 | 804697 | MUFFLER | 1 | |
| 26 | 621153 | 621153 | 621153 | 621153 | 621153 | 621153 | BOLT | 4 | |
| 27 | 686032 | 686032 | 686032 | 686032 | 686032 | 686032 | NUT W/FLANGE | 4 | |
| 28 | 771235 | 771235 | 771235 | 771235 | 771235 | 771235 | BASE | 2 | |
| 29 | 770551 | 770551 | 770551 | 770551 | 770551 | 770551 | FOOT RUBBER | 4 | |
| 30 | 780125 | 780125 | 780125 | 780125 | 780125 | 780125 | CENTER DISK (LIQUID SIDE) | 2 | |
| 32 | 687229 | 687229 | 687229 | 687229 | 687229 | 687229 | NUT | 12 | |
| 33 | 681300 | 681300 | 681300 | 681300 | 681300 | 681300 | SPRING WASHER | 12 | |
| 34 | 631329 | 631329 | 631329 | 631329 | 631329 | 631329 | FLAT WASHER | 12 | |
| 35 | 771244 | 771244 | 771244 | 771244 | 771244 | 771244 | TOOL | 2 | |
| 36 | 686033 | 686033 | 686033 | 686033 | 686033 | 686033 | NUT W/FLANGE | 12 | |
| 37 | 680257 | 680257 | 680257 | 680257 | 680257 | 680257 | SPRING WASHER | 12 | |
| 38 | 631330 | 631330 | 631330 | 631330 | 631330 | 631330 | FLAT WASHER | 12 | |
| KIT | K25-PC-PP | K25-PN-PP | K25-PE-PP | K25-PH-PP | K25-PS-PP | K25-PV-PP | Liquid Side Kit | | |
| KIT | K225-AP | | | | | | Air Motor Kit | | |

Air Operated Double Diaphragm Pump

General Tools:

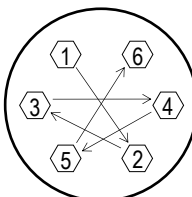
- Socket wrenches - 10mm, 12mm, 13mm, 17mm, 22mm
- Hexagonal box wrench - 5mm
- Open-end wrenches - 12mm, 13mm, 22mm
- Adjustable angle wrenches
- Phillips head screw driver

Special Tools:

- Disk remover (771244). (included)
- Sleeve remover (713148). (sold separately)

Miscellaneous:

- Assembly Oil - turbine oil class 1 (equivalent to ISO VG32 grade)
- Nuts - M14 x 1.5
- Urea grease grade (NLGI) No. 2



Tightening torque for center rod and out chambers.

| | |
|-------------------------|--------------------|
| Center Rod | 29 ft-lbf {40 N-m} |
| Out Chambers C/N/E/V-PP | 8 ft-lbf {10 N-m} |
| Out Chambers H/S-PP | 15 ft-lbf {20N-m} |

Tightening torque for manifold retainer nuts.

| | |
|--------------|-------------------|
| BPC/N/E/V-PP | 8 ft-lbf {10 N-m} |
| BPH/S-PP | 9 ft-lbf {12 N-m} |

Customer Notes

Model #: _____
 Description: _____
 Serial #: _____
 Date Installed: _____
 Department Location: _____
 Tag/Project: _____