

EXPLODED VIEW & PARTS LISTING

Air Operated Double Diaphragm Pump

Model: NDP-25BF[x]
Cast Iron Series



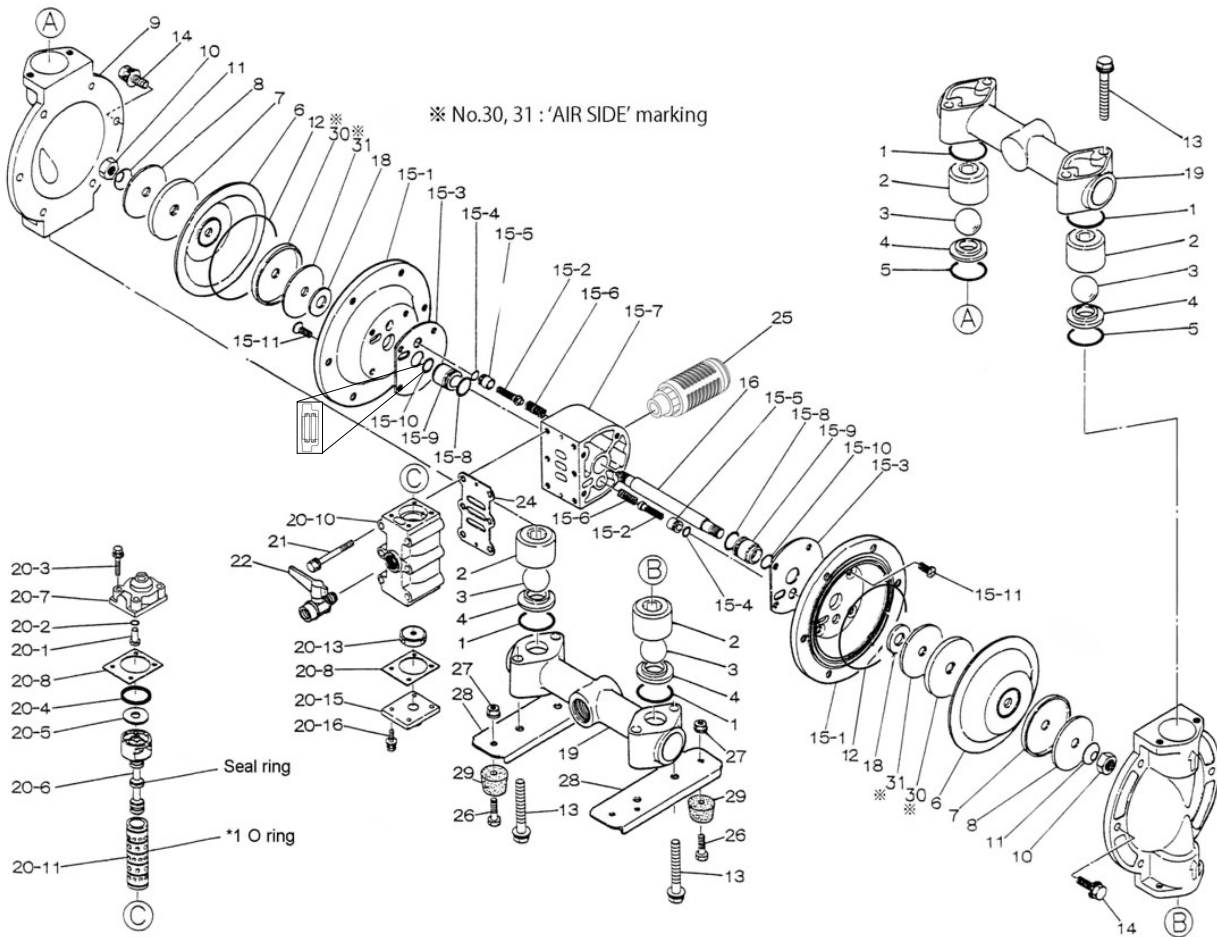
To Purchase:

- 800-990-7867
- sales@yamadapump.com
- Find My Rep

More Information:

- YouTube: @yamadapump
- yamadapump.com
- Data Sheets | CAD Drawings | Manuals Literature | BOM | Performance Curves

Trial Program



Air Operated Double Diaphragm Pump

	NDP-25BFC	NDP-25BFN	NDP-25BFE	NDP-25BFH	NDP-25BFS	NDP-25BFV			
	851532	851533	851534	852101	852702	851535			
REF. NO.	PART NO.	PART NO.	PART NO.	PART NO.	PART NO.	PART NO.	DESCRIPTION	QTY.	REORDER
1	640044	640044	683997	640044	683997	642044	O-RING	4	
2	711703	711703	711703	711703	711703	711703	BALL GUIDE	4	
3	770556	770581	770590	773127	773171	770599	BALL	4	
4	590087	590087	590087	590087	590087	590087	VALVE SEAT	4	
5	640134	640134	683996	640134	683996	642134	O-RING	2	
6	772961	772962	772963	771363	771974	772964	DIAPHRAGM	2	
7	709151	709151	709151	709151	709151	709151	CENTER DISK (LIQUID SIDE)	2	
8	709150	709150	709150	709150	709150	709150	WASHER (LIQUID SIDE)	2	
9	711695	711695	711695	711695	711695	711695	OUT CHAMBER	2	
10	682263	682263	682263	682263	682263	682263	NUT SS	2	
11	682730	682730	682730	682730	682730	682730	CONED DISK SPRING	2	
12	-	-	-	640154	640154	-	O-RING	2	
13	611185	611185	611185	611185	611185	611185	BOLT	8	
13	631917	631917	631917	631917	631917	631917	WAVE WASHER	8	
14	611177	611177	611177	611177	611177	611177	BOLT	12	
14	631917	631917	631917	631917	631917	631917	WAVE WASHER	12	
15	804880	804880	804880	804880	804880	804880	BODY ASSY.	1	
15-1	715939	715939	715939	715939	715939	715939	AIR CHAMBER	2	
15-2	802360	802360	802360	802360	802360	802360	PILOT VALVE ASSY.	2	
15-3	771057	771057	771057	771057	771057	771057	GASKET	2	
15-4	640009	640009	640009	640009	640009	640009	O-RING	2	
15-5	771945	771945	771945	771945	771945	771945	PILOT VALVE SEAT	2	
15-6	708666	708666	708666	708666	708666	708666	SPRING	2	
15-7	709812	709812	709812	709812	709812	709812	BODY	1	
15-8	685276	685276	685276	685276	685276	685276	O-RING	2	
15-9	780324	780324	780324	780324	780324	780324	THROAT BEARING	2	
15-10	685414	685414	685414	685414	685414	685414	V-PACKING	2	
15-11	682486	682486	682486	682486	682486	682486	BOLT W/WASHER	8	
16	709162	709162	709162	709162	709162	709162	CENTER ROD	1	
18	771054	771054	771054	771054	771054	771054	CUSHION	2	
19	831322	831322	831322	831322	831322	831322	MANIFOLD	2	
20	802362	802362	802362	802362	802362	802362	VALVE ASSY.	1	
20-1	709161	709161	709161	709161	709161	709161	RESET BUTTON	1	
20-2	640005	640005	640005	640005	640005	640005	O-RING	1	
20-3	682704	682704	682704	682704	682704	682704	BOLT W/WASHER	4	
20-4	771241	771241	771241	771241	771241	771241	PACKING	1	
20-5	715961	715961	715961	715961	715961	715961	WASHER	1	
20-6	802400	802400	802400	802400	802400	802400	C SPOOL ASSY	1	
20-6-seal	771053	771053	771053	771053	771053	771053	SEAL RING	5	
20-7	710221	710221	710221	710221	710221	710221	CAP A	1	
20-8	771240	771240	771240	771240	771240	771240	GASKET	2	
20-10	711639	711639	711639	711639	711639	711639	VALVE BODY	1	
20-11	803931	803931	803931	803931	803931	803931	SLEEVE ASSY.	1	
20-11-*1	771080	771080	771080	771080	771080	771080	O-RING	6	
20-13	771914	771914	771914	771914	771914	771914	CUSHION	1	
20-15	709305	709305	709305	709305	709305	709305	CAP B	1	
20-16	682262	682262	682262	682262	682262	682262	BOLT W/WASHER	4	
21	682265	682265	682265	682265	682265	682265	BOLT W/WASHER	6	
22	686970	686970	686970	686970	686970	686970	BALL VALVE	1	
24	771056	771056	771056	771056	771056	771056	GASKET	1	
25	804697	804697	804697	804697	804697	804697	MUFFLER	1	
26	611148	611148	611148	611148	611148	611148	BOLT	4	
27	682276	682276	682276	682276	682276	682276	NUT W/ FLANGE	4	
28	709156	709156	709156	709156	709156	709156	BASE	2	
29	770551	770551	770551	770551	770551	770551	FOOT RUBBER	4	
30	716258	716258	716258	716258	716258	716258	CENTER DISK (AIR SIDE)	2	
31	716259	716259	716259	716259	716259	716259	WASHER (AIR SIDE)	2	
KIT	K25-MC-1	K25-MN-1	K25-ME-1	K25-MH-1	K25-MS-1	K25-MV-1	LIQUID END KIT		
KIT	K225-AM						AIR MOTOR KIT		

Air Operated Double Diaphragm Pump

General Tools:

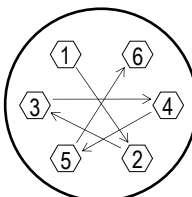
- Socket wrenches - 10mm, 12mm, 13mm, 17mm, 22mm
- Hexagonal box wrench - 5mm
- Open-end wrenches - 22mm

Special Tools:

- Sleeve remover (713148) used to remove sleeves (sold separately).

Miscellaneous:

- Assembly Oil - turbine oil class 1 - no additives (equivalent to ISO VGA32 grade)
- Nuts - M14 x 1.5
- Urea grease grade (NLGI) No. 2
- Lubricants - equivalent to Loctite Anti-Seize 767



Tightening torque for center rod and out chambers.

Center Rod	29 ft-lbf {40 N-m}
Out Chambers C/N/E/V	8 ft-lbf {10 N-m}
Out Chambers H/S	15 lbf-ft {20N-m}

Tightening torque for manifold bolts.

BFC/N/E/H/S/V	8 ft-lbf {10 N-m}
---------------	-------------------

Customer Notes

Model #: _____
 Description: _____
 Serial #: _____
 Date Installed: _____
 Department Location: _____
 Tag/Project: _____