

EXPLODED VIEW & PARTS LISTING

Air Operated Double Diaphragm Pump

Model: NDP-25BAT

Model# 851531



To Purchase:

☎ 800-990-7867

✉ sales@yamadapump.com

📍 Find My Rep

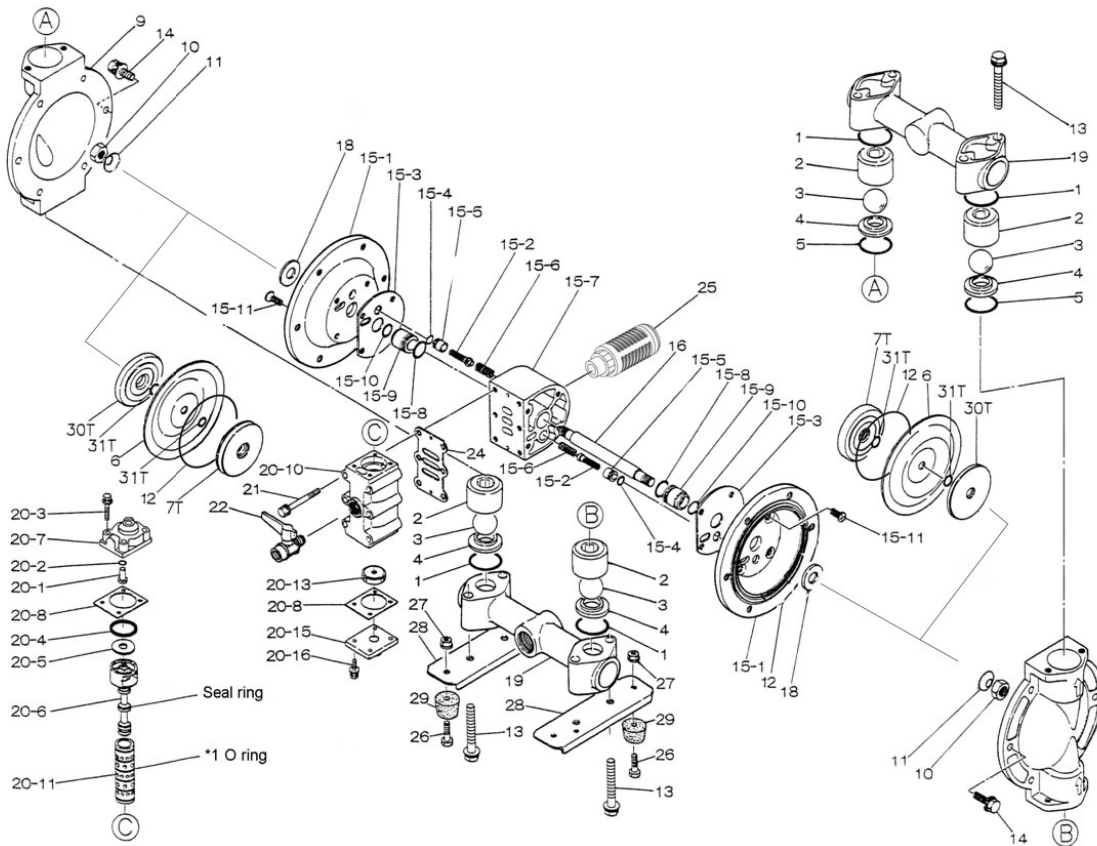
More Information:

▶ YouTube: @yamadapump

🌐 yamadapump.com

Data Sheets | CAD Drawings | Manuals
Literature | BOM | Performance Curves

Trial Program



Air Operated Double Diaphragm Pump

REF. NO.	PART NO.	DESCRIPTION	QTY.	REORDER
1	643044	O RING 45.7MM X 3.5MM	4	
2	711702	BALL GUIDE 25AL	4	
3	770691	BALL 25T -35MM PTFE	4	
4	590087	VALVE SEAT 25AL/FC	4	
5	771130	O RING 44.2MM X 2.4MM	2	
6	771110	DIAPHRAGM (PTFE) 25	2	
7T	709459	CENTER DISK 25T	2	
9	711687	OUT CHAMBER 25AL	2	
10	682263	NUT SS M14 X 1.5	2	
11	682730	CONED DISK SPRING M14	2	
12	640154	O RING	2	
13	611185	BOLT	8	
13	631917	WAVE WASHER	8	
14	611177	BOLT	12	
14	631917	WAVE WASHER	12	
15	804880	BODY ASSY	1	
15- 1	715939	AIR CHAMBER	2	
15- 2	802360	PILOT VALVE ASSY 20/25	2	
15- 3	771057	GASKET 20/25	2	
15- 4	640009	O RING 11MM X 2.5MM B	2	
15- 5	771945	PILOT VALVE SEAT 20/25	2	
15- 6	708666	SPRING 20/25	2	
15- 7	709812	BODY 20/25	1	
15- 8	685276	O RING 23.3MMX2.4MM	2	
15- 9	772703	THROAT BEARING 20/25 N	2	
15-10	685414	V-PACKING 20/25	2	
15-11	682486	BOLT FLAT HD W/ WASHE	8	
16	709162	CENTER ROD 25	1	
18	771054	CUSHION 20/25	2	
19	831281	MANIFOLD 25AL	2	
20	802362	VALVE ASSY	1	
20- 1	709161	RESET BUTTON 20/25	1	
20- 2	640005	O RING 7.5MM X 2.0MM	1	
20- 3	682704	BOLT M6 FT ZINC W/ WAS	4	
20- 4	771241	PACKING 20/25	1	
20- 5	715961	WASHER	1	
20- 6	802400	C SPOOL ASSY	1	
20-6-seal	771053	SEAL RING	5	
20- 7	710221	CAP A 20/25 METAL	1	
20- 8	771240	GASKET 20/25	2	
20-10	711639	VALVE BODY 20/25 METAL	1	
20-11	803931	SLEEVE ASSY	1	
20-11-*1	771080	O-RING	6	
20-13	771914	CUSHION 20/25	1	
20-15	709305	CAP B 20/25 METAL	1	
20-16	682262	BOLT M6 FT ZINC W/ WAS	4	
21	682265	BOLT M8 PT ZINC W/ WAS	6	
22	684320	BALL VALVE 25&25F 3/8	1	
24	771056	GASKET 20/25	1	
25	804697	MUFFLER 20/25PP NEW	1	
26	611148	BOLT M8X1.25X22 HEX FT	4	
27	682276	NUT W/ FLANGE M8 X 1.2	4	
28	709156	BASE 25 METAL	2	
29	770551	FOOT RUBBER 15PP,20/25	4	
30T	709327	CENTER DISK 25AL-T	2	
31T	643013	O RING 13.8MM X 2.4MM	4	
KIT	K25-MT-1	LIQUID END KIT		
KIT	K225-AM	AIR MOTOR KIT		

General Tools:

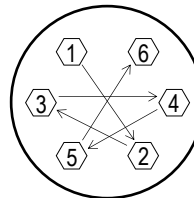
- Socket wrenches - 10mm, 12mm, 13mm, 17mm, 22mm
- Hexagonal box wrench - 5mm
- Open-end wrenches - 22mm

Special Tools:

- Sleeve remover (713148) used to remove sleeves (sold separately).

Miscellaneous:

- Assembly Oil - turbine oil none additional class 1 (equivalent to ISO VGA32 grade)
- Nuts - M14 x 1.5
- Urea grease grade (NLGI) No. 2
- Lubricants - equivalent to Loctite Anti-Seize 767



Tightening torque for center rod and out chambers.

Center Rod 29 ft-lbf {40 N-m}
Out Chambers 15 ft-lbf {20 N-m}

Tightening torque for manifold bolts.

25BAT 28 ft-lbf {35 N-m}

Customer Notes

Model #: _____
Description: _____
Serial #: _____
Date Installed: _____
Department Location: _____
Tag/Project: _____