

# EXPLODED VIEW & PARTS LISTING

## Air Operated Double Diaphragm Pump

Model: NDP-25BAT-PP

Model#: 854126

(PTFE fitted w/non-metallic center body)



### To Purchase:

☎ 800-990-7867

✉ sales@yamadapump.com

📍 Find My Rep

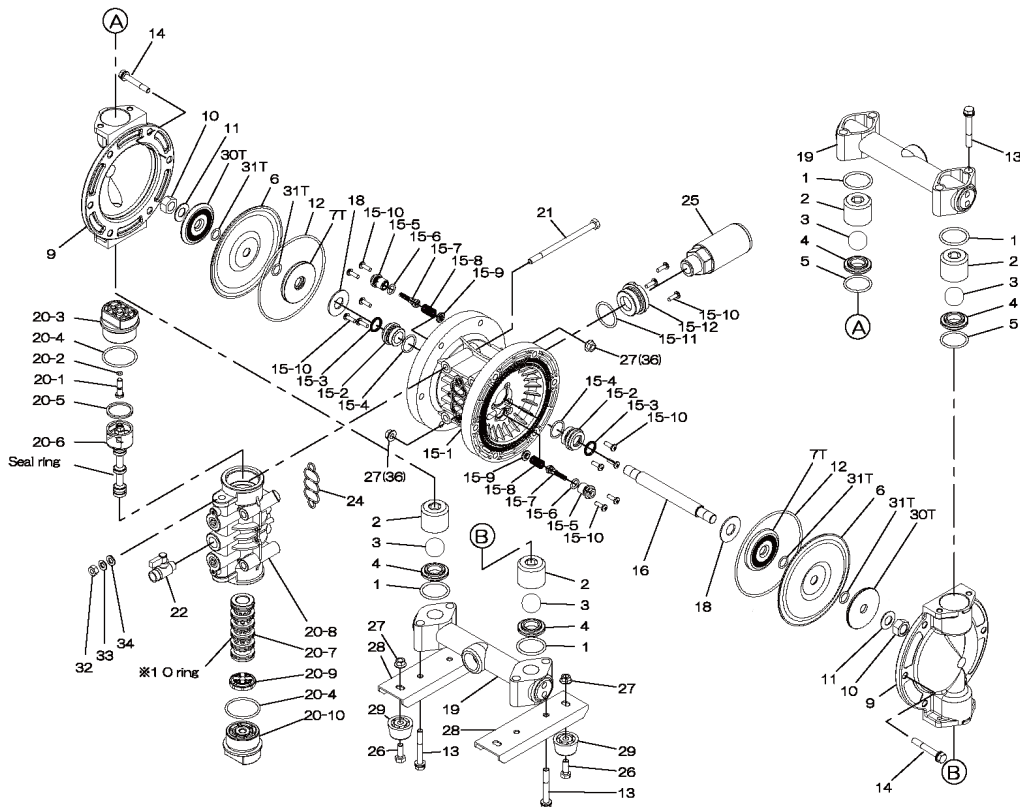
### More Information:

▶ YouTube: @yamadapump

🌐 yamadapump.com

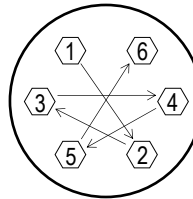
Data Sheets | CAD Drawings | Manuals  
Literature | BOM | Performance Curves

### Trial Program



Air Operated Double Diaphragm Pump (PTFE fitted w/non-metallic center body)

REF. No.	PART No.	DESCRIPTION	QTY.	REORDER
1	643044	O-RING	4	
2	711702	BALL GUIDE	4	
3	770691	BALL	4	
4	590087	VALVE SEAT	4	
5	771130	O-RING	2	
6	771110	DIAPHRAGM	2	
7T	709459	CENTER DISK (liquid side)	2	
9	711687	OUT CHAMBER	2	
10	682263	NUT	2	
11	682730	CONED DISC SPRING	2	
12	640154	O-RING	2	
13	611185	BOLT	8	
13	631917	WAVE WASHER	8	
14	611177	BOLT	12	
14	631917	WAVE WASHER	12	
<b>15</b>	<b>804604</b>	<b>BODY ASSY.</b>	<b>1</b>	
15-1	772929	BODY -PP	1	
15-2	772931	THROAT BEARING	2	
15-3	685414	V-PACKING	2	
15-4	685276	O-RING	2	
15-5	772932	VALVE SEAT	2	
15-6	640009	O-RING	2	
15-7	802360	PILOT VALVE ASSY.	2	
15-8	708666	SPRING	2	
15-9	772948	SPRING SEAT	2	
15-10	686030	TAPPING SCREW	13	
15-11	640132	O-RING	1	
15-12	772933	BUSHING	1	
16	709162	CENTER ROD	1	
18	771054	CUSHION	2	
19	831281	MANIFOLD	2	
<b>20</b>	<b>804608</b>	<b>VALVE BODY ASSY.</b>	<b>1</b>	
20-1	772991	RESET BUTTON	1	
20-2	640002	O-RING	1	
20-3	772946	CAP A	1	
20-4	640043	O-RING	2	
20-5	771241	PACKING	1	
20-6	802400	C-SPOOL ASSY.	1	
20-6-seal	771053	SEAL RING	5	
20-7	804609	SLEEVE ASSY.	1	
20-7-*1	686029	O-RING	6	
20-8	832902	VALVE BODY ASSY.	1	
20-9	771914	CUSHION	1	
20-10	772947	CAP B	1	
21	682265	BOLT	6	
22	684320	BALL VALVE	1	
24	771056	GASKET	1	
25	804697	SILENCER	1	
26	611148	BOLT	4	
27	682276	NUT WITH FLANGE	4	
28	709156	PUMP BASE	2	
29	770551	CUSHION	4	
30T	709327	CENTER DISK (air side)	2	
31T	643013	O-RING	4	
KIT	K25-MT-1	LIQUID SIDE KIT		
KIT	K225-AP	AIR MOTOR KIT		



**Tightening torque for center rod and out chambers.**

Center Rod 29 ft-lbf {40 N-m}  
Out Chambers 15 ft-lbf {20 N-m}

**Tightening torque for manifold retainer bolts.**  
25BAT-PP 25 ft-lbf {35 N-m}

**General Tools:**

- Socket wrench - 10mm, 12mm, 13mm, 17mm, 22mm
- Hexagonal box wrench - 5mm
- Open-end wrench - 12mm, 13mm, 22mm
- Adjustable angle wrenches
- Phillips head screw driver

**Special Tools:**

- Sleeve remover (713148) used to remove the sleeve.

**Miscellaneous:**

- Assembly Oil - turbine oil none additional class 1 (equivalent to ISO VG32 grade)
- Nuts - M14 x 1.5
- Urea grease grade (NLGI) No. 2

**Customer Notes**

Model #: \_\_\_\_\_  
Description: \_\_\_\_\_  
Serial #: \_\_\_\_\_  
Date Installed: \_\_\_\_\_  
Department Location: \_\_\_\_\_  
Tag/Project: \_\_\_\_\_