

# EXPLODED VIEW & PARTS LISTING

## Air Operated Double Diaphragm Pump

Model: NDP-25BA[x]-PP

Aluminum Series

(rubber fitted w/non-metallic center body)



### To Purchase:

☎ 800-990-7867

✉ sales@yamadapump.com

📍 Find My Rep

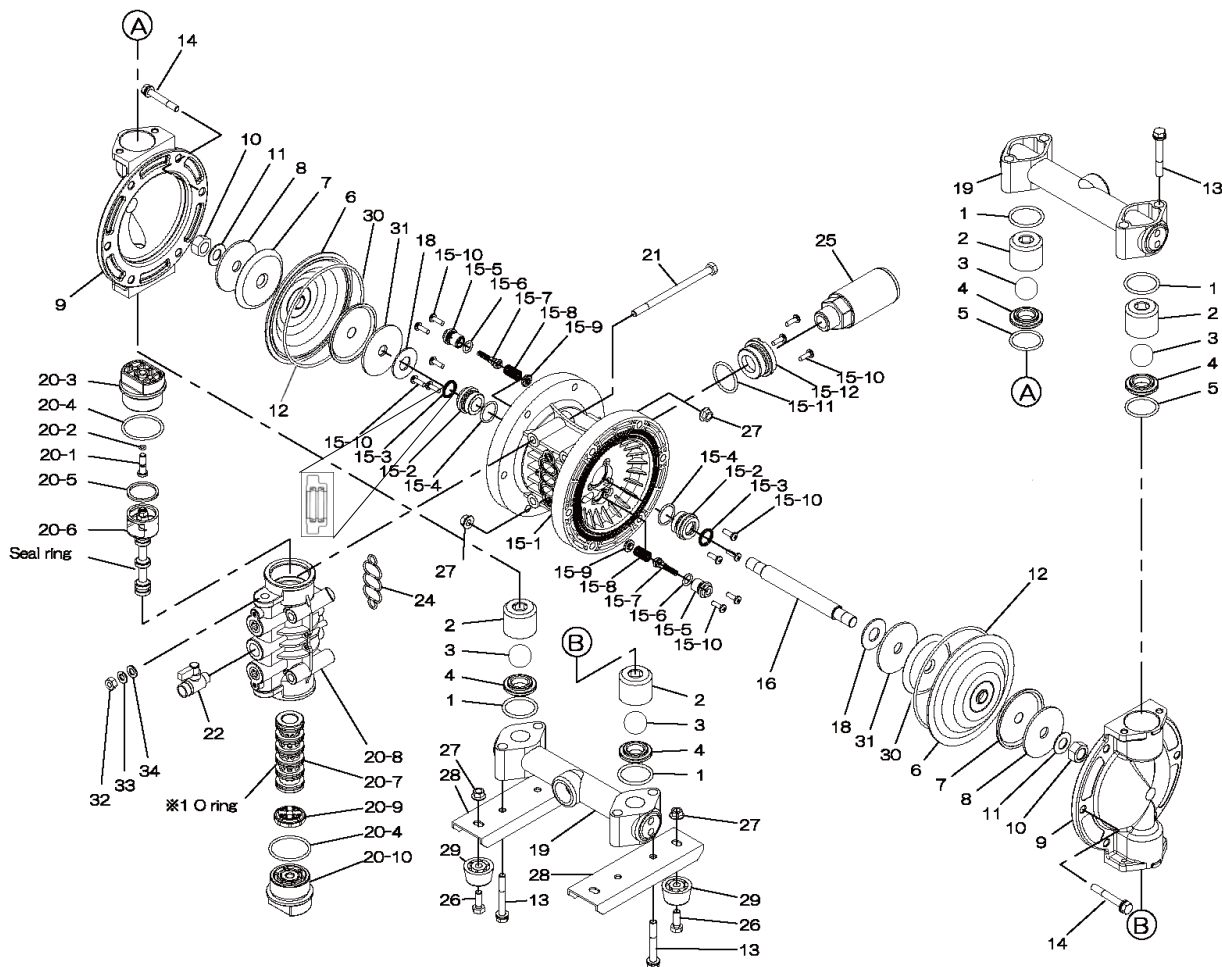
### More Information:

▶ YouTube: @yamadapump

🌐 yamadapump.com

Data Sheets | CAD Drawings | Manuals Literature | BOM | Performance Curves

### Trial Program

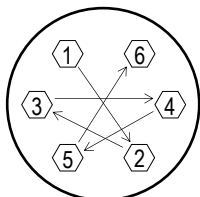


Air Operated Double Diaphragm Pump (rubber fitted w/non-metallic center body)

	NDP-25BAC-PP	NDP-25BAE-PP	NDP-25BAH-PP	NDP-25BAN-PP	NDP-25BAS-PP	NDP-25BAV-PP			
	854122	854124	854127	854123	854128	854125			
REF. No.	PART No.	PART No.	PART No.	PART No.	PART No.	PART No.	DESCRIPTION	QTY.	REORDER
1	640044	683997	640044	640044	683997	642044	O-RING	4	
2	711702	711702	711702	711702	711702	711702	BALL GUIDE	4	
3	770556	770590	773127	770581	773171	770599	BALL	4	
4	590087	590087	590087	590087	590087	590087	VALVE SEAT	4	
5	640134	683996	640134	640134	683996	642134	O-RING	2	
6	772961	772963	771363	772962	771974	772964	DIAPHRAGM	2	
7	709151	709151	709151	709151	709151	709151	CENTER DISK (LIQUID SIDE)	2	
8	709150	709150	709150	709150	709150	709150	WASHER (LIQUID SIDE)	2	
9	711687	711687	711687	711687	711687	711687	OUT CHAMBER	2	
10	682263	682263	682263	682263	682263	682263	NUT	2	
11	682730	682730	682730	682730	682730	682730	CONED DISK SPRING	2	
12	-	-	640154	-	640154	-	O-RING	2	
13	611185	611185	611185	611185	611185	611185	BOLT	8	
13	631917	631917	631917	631917	631917	631917	WAVE WASHER	8	
14	611177	611177	611177	611177	611177	611177	BOLT	12	
14	631917	631917	631917	631917	631917	631917	WAVE WASHER	12	
15	804604	804604	804604	804604	804604	804604	BODY ASSY.	1	
15-1	772929	772929	772929	772929	772929	772929	BODY (-PP)	1	
15-2	780326	780326	780326	780326	780326	780326	THROAT BEARING	2	
15-3	685414	685414	685414	685414	685414	685414	V-PACKING	2	
15-4	685276	685276	685276	685276	685276	685276	O-RING	2	
15-5	772932	772932	772932	772932	772932	772932	VALVE SEAT	2	
15-6	640009	640009	640009	640009	640009	640009	O-RING	2	
15-7	802360	802360	802360	802360	802360	802360	PILOT VALVE ASSY.	2	
15-8	708666	708666	708666	708666	708666	708666	SPRING	2	
15-9	772948	772948	772948	772948	772948	772948	SPRING SEAT	2	
15-10	686030	686030	686030	686030	686030	686030	TAPPING SCREW	13	
15-11	640132	640132	640132	640132	640132	640132	O-RING	1	
15-12	772933	772933	772933	772933	772933	772933	BUSHING	1	
16	709162	709162	709162	709162	709162	709162	CENTER ROD	1	
18	771054	771054	771054	771054	771054	771054	CUSHION	2	
19	831281	831281	831281	831281	831281	831281	MANIFOLD	2	
20	804608	804608	804608	804608	804608	804608	VALVE BODY ASSY.	1	
20-1	772991	772991	772991	772991	772991	772991	RESET BUTTON	1	
20-2	640002	640002	640002	640002	640002	640002	O-RING	1	
20-3	772946	772946	772946	772946	772946	772946	CAP A	1	
20-4	640043	640043	640043	640043	640043	640043	O-RING	2	
20-5	771241	771241	771241	771241	771241	771241	PACKING	1	
20-6	802400	802400	802400	802400	802400	802400	C-SPOOL ASSY.	1	
20-6-seal	771053	771053	771053	771053	771053	771053	SEAL RING	5	
20-7	804609	804609	804609	804609	804609	804609	SLEEVE ASSY.	1	
20-7-*1	686029	686029	686029	686029	686029	686029	O-RING	6	
20-8	832903	832903	832903	832903	832903	832903	VALVE BODY	1	
20-9	771914	771914	771914	771914	771914	771914	CUSHION	1	
20-10	772947	772947	772947	772947	772947	772947	CAP B	1	
21	682265	682265	682265	682265	682265	682265	BOLT	4	
22	686970	686970	686970	686970	686970	686970	BALL VALVE	1	
24	772848	772848	772848	772848	772848	772848	GASKET	1	
25	804697	804697	804697	804697	804697	804697	MUFFLER	1	
26	611148	611148	611148	611148	611148	611148	BOLT	4	
27	682276	682276	682276	682276	682276	682276	NUT W/FLANGE	16	
28	709156	709156	709156	709156	709156	709156	BASE	2	
29	770551	770551	770551	770551	770551	770551	FOOT RUBBER	4	
30	716258	716258	716258	716258	716258	716258	CENTER DISC	2	
31	716259	716259	716259	716259	716259	716259	WASHER	2	
32	687229	687229	687229	687229	687229	687229	NUT	4	
33	681300	681300	681300	681300	681300	681300	SPRING WASHER (AIR SIDE)	4	
34	631329	631329	631329	631329	631329	631329	FLAT WASHER (AIR SIDE)	4	
KIT	K25-MC-1	K25-ME-1	K25-MH-1	K25-MN-1	K25-MS-1	K25-MV-1	LIQUID SIDE KIT		
KIT				K225-AP			AIR MOTOR KIT		

**Air Operated Double Diaphragm Pump**

*(rubber fitted w/non-metallic center body)*



**Tightening torque for center rod and out chambers.**

Center Rod	29 ft-lbf {40 N-m}
Out Chambers C/N/E/V	8 ft-lbf {10 N-m}
Out Chambers H/S	15 ft-lbf {20 N-m}

**Tightening torque for manifold retainer bolts.**

C/E/N/V/S/H	8 ft-lbf {10 N-m}
-------------	-------------------

**General Tools:**

- Socket wrench - 10mm, 12mm, 13mm, 17mm, 22mm
- Hexagonal box wrench - 5mm
- Open-end wrench - 12mm, 13mm, 22mm
- Adjustable angle wrenches
- Phillips head screw driver

**Special Tools:**

- Sleeve remover (713148) used to remove the sleeve.

**Miscellaneous:**

- Assembly Oil - turbine oil class 1 - no additives (equivalent to ISO VG32 grade)
- Nuts - M14 x 1.5
- Urea grease grade (NLGI) No. 2

<b>Customer Notes</b>	
<i>Model #:</i>	_____
<i>Description:</i>	_____
<i>Serial #:</i>	_____
<i>Date Installed:</i>	_____
<i>Department Location:</i>	_____
<i>Tag/Project:</i>	_____