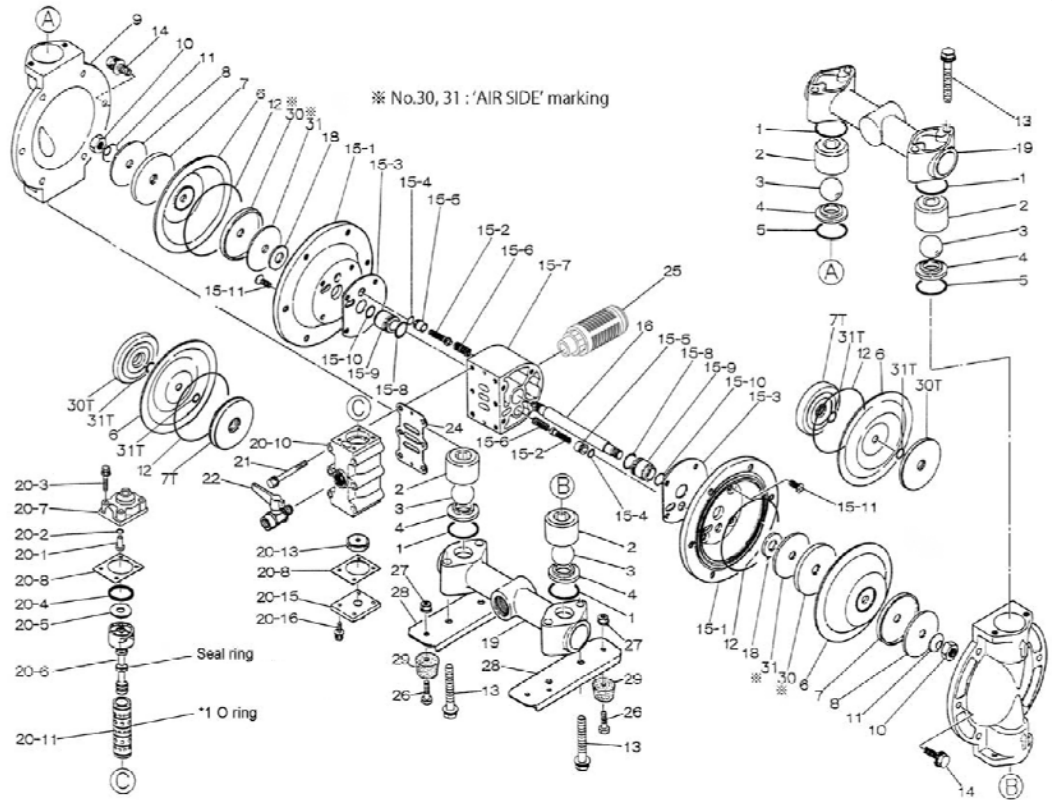


Air Operated Double Diaphragm Pump



Serial number 487505 and above

| Ref. No. | Description | Qty. | Part No. |
|----------|----------------------------|------|----------|
| 1 | O-ring | 4 | 683997 |
| 2 | Valve Stopper | 4 | 711702 |
| 3 | Ball | 4 | 773171 |
| 4 | Valve Seat | 4 | 590087 |
| 5 | O-ring | 2 | 683996 |
| 6 | Diaphragm | 2 | 771974 |
| 7 | Center Disk (liquid side) | 2 | 709151 |
| 7T | N/A | - | - |
| 8 | Plain Washer (liquid side) | 2 | 709150 |
| 9 | Out Chamber | 2 | 711687 |
| 10 | Nut | 2 | 682263 |
| 11 | Coned Disk Spring | 2 | 682730 |
| 12 | O-ring | 2 | 640154 |
| 13 | Bolt | 8 | 686364 |
| 14 | Bolt | 12 | 686361 |
| 15 | Body Assembly | 1 | 804880 |
| 16 | Center Rod | 1 | 709162 |
| 18 | Cushion | 2 | 771054 |
| 19 | Manifold | 2 | 831281 |
| 20 | Valve Body Assembly | 1 | 802362 |
| 21 | Bolt | 6 | 682265 |
| 22 | Ball Valve | 1 | 684320 |
| 24 | Gasket | 1 | 771056 |
| 25 | Silencer | 1 | 804697 |
| 26 | Bolt | 4 | 611148 |
| 27 | Nut with Flange | 4 | 682276 |
| 28 | Pump Base | 2 | 709156 |
| 29 | Cushion | 4 | 770551 |
| 30 | Center Disk (air side) | 2 | 716258 |
| 30T | N/A | - | - |
| 31 | Washer (air side) | 2 | 716259 |
| 31T | N/A | - | - |

804880 Body Assembly

| Ref. No. | Description | Qty. | Part No. |
|----------|-------------------|------|----------|
| 15-1 | Air Chamber | 2 | 715939 |
| 15-2 | Pilot Valve Assy. | 2 | 802360 |
| 15-3 | Gasket | 2 | 771057 |
| 15-4 | O-ring | 2 | 640009 |
| 15-5 | Valve Seat | 2 | 771945 |
| 15-6 | Spring | 2 | 708666 |
| 15-7 | Body | 1 | 709812 |
| 15-8 | O-ring | 2 | 685276 |
| 15-9 | Throat Bearing | 2 | 772703 |
| 15-10 | Packing | 2 | 685414 |
| 15-11 | Flat Head Bolt | 8 | 682486 |

802362 Valve Body Assembly

| Ref. No. | Description | Qty. | Part No. |
|-----------|---------------------|------|----------|
| 20-1 | Reset Button | 1 | 709161 |
| 20-2 | O-ring | 1 | 640005 |
| 20-3 | Bolt | 4 | 682704 |
| 20-4 | Packing | 1 | 771241 |
| 20-5 | Plain Washer | 1 | 715961 |
| 20-6 | C Spool Valve Assy. | 1 | 802400 |
| 20-6 seal | Seal Ring | 5 | 771053 |
| 20-7 | Cap | 1 | 710221 |
| 20-8 | Gasket | 2 | 771240 |
| 20-10 | Valve Body | 1 | 711639 |
| 20-11 | Sleeve Assembly | 1 | 803931 |
| 20-11-*1 | O-ring | 6 | 771080 |
| 20-13 | Cushion | 1 | 771914 |
| 20-15 | Cap | 1 | 709305 |
| 20-16 | Bolt | 4 | 682262 |

Repair Kits

K25-MS-1 Liquid Side Repair Kit

| Ref. No. | Description | Qty. | Part No. |
|----------|-------------|------|----------|
| 1 | O-ring | 4 | 683997 |
| 3 | Ball | 4 | 773171 |
| 5 | O-ring | 2 | 683996 |
| 6 | Diaphragm | 2 | 771974 |
| 12 | O-ring | 2 | 640154 |

K225-AM Air Side Repair Kit

| Ref. No. | Description | Qty. | Part No. |
|-----------|-------------------|------|----------|
| 18 | Cushion | 2 | 771054 |
| 24 | Gasket | 1 | 771056 |
| 15-2 | Pilot Valve Assy. | 2 | 802360 |
| 15-3 | Gasket | 2 | 771057 |
| 15-4 | O-ring | 2 | 640009 |
| 15-5 | Valve Seat | 2 | 771945 |
| 15-6 | Spring | 2 | 708666 |
| 15-8 | O-ring | 2 | 685276 |
| 15-9 | Throat Bearing | 2 | 772703 |
| 15-10 | Packing | 2 | 685414 |
| 20-2 | O-ring | 1 | 640005 |
| 20-4 | Packing | 1 | 771241 |
| 20-6 seal | Seal Ring | 5 | 771053 |
| 20-8 | Gasket | 2 | 771240 |
| 20-11-*1 | O-ring | 6 | 771080 |
| 20-13 | Cushion | 1 | 771914 |