

# EXPLODED VIEW & PARTS LISTING

Model: NDP-20BS[x]  
Stainless Steel Series



## Air Operated Double Diaphragm Pump



### To Purchase:

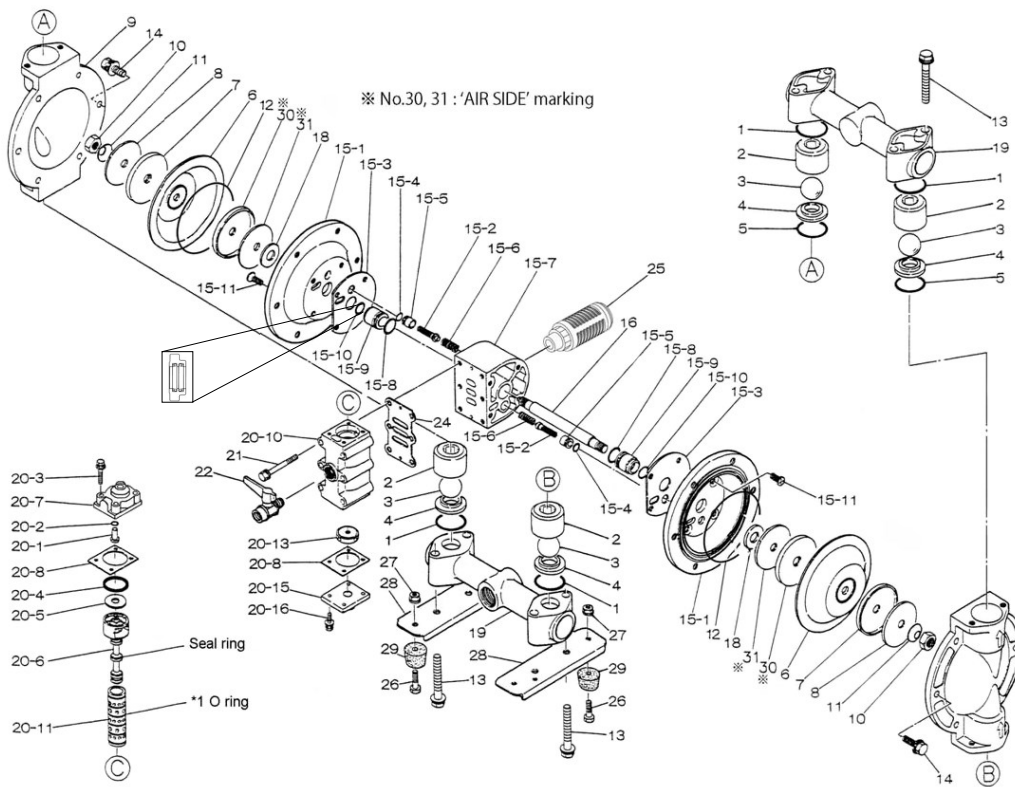
- 800-990-7867
- sales@yamadapump.com
- Find My Rep

### More Information:

- YouTube: @yamadapump
- yamadapump.com
- Data Sheets | CAD Drawings | Manuals Literature | BOM | Performance Curves

Note: starting serial # 487505

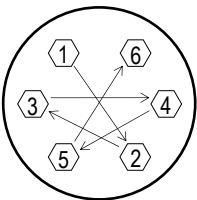
### Trial Program



Air Operated Double Diaphragm Pump

	NDP-20BSC	NDP-20BSE	NDP-20BSH	NDP-20BSN	NDP-20BSS	NDP-20BSV			
	851519	851521	852099	851520	852694	851522			
REF. No.	PART No.	PART No.	PART No.	PART No.	PART No.	PART No.	DESCRIPTION	QTY.	REORDER
1	640036	684118	640036	640036	684118	642036	O-RING	4	
2	711701	711701	711701	711701	711701	711701	BALL GUIDE	4	
3	770705	770723	773126	770720	773170	770726	BALL	4	
4	711705	711705	711705	711705	711705	711705	VALVE SEAT	4	
5	640132	684117	640132	640132	684117	642132	O-RING	2	
6	772957	772959	771362	772958	771973	772960	DIAPHRAGM	2	
7	709153	709153	709153	709153	709153	709153	CENTER DISK (liquid side)	2	
8	709152	709152	709152	709152	709152	709152	PLAIN WASHER (liquid side)	2	
9	711693	711693	711693	711693	711693	711693	OUT CHAMBER	2	
10	682263	682263	682263	682263	682263	682263	NUT	2	
11	682730	682730	682730	682730	682730	682730	CONED DISK SPRING	2	
12	-	-	640151	-	640151	-	O-RING	2	
13	621159	621159	621159	621159	621159	621159	BOLT	8	
13	631936	631936	631936	631936	631936	631936	WAVE WASHER	8	
14	621151	621151	621151	621151	621151	621151	BOLT	12	
14	631936	631936	631936	631936	631936	631936	WAVE WASHER	12	
15	804878	804878	804878	804878	804878	804878	BODY ASSY.	1	
15-1	715937	715937	715937	715937	715937	715937	AIR CHAMBER	2	
15-2	802360	802360	802360	802360	802360	802360	PILOT VALVE ASSY.	2	
15-3	771057	771057	771057	771057	771057	771057	GASKET	2	
15-4	640009	640009	640009	640009	640009	640009	O-RING	2	
15-5	771945	771945	771945	771945	771945	771945	VALVE SEAT	2	
15-6	708666	708666	708666	708666	708666	708666	SPRING	2	
15-7	709812	709812	709812	709812	709812	709812	BODY	1	
15-8	685276	685276	685276	685276	685276	685276	O-RING	2	
15-9	780324	780324	780324	780324	780324	780324	THROAT BEARING	2	
15-10	685414	685414	685414	685414	685414	685414	PACKING	2	
15-11	682486	682486	682486	682486	682486	682486	FLAT HEAD BOLT	8	
16	709163	709163	709163	709163	709163	709163	CENTER ROD	1	
18	771054	771054	771054	771054	771054	771054	CUSHION	2	
19	831270	831270	831270	831245	831270	831245	MANIFOLD	2	
20	802362	802362	802362	802362	802362	802362	VALVE BODY ASSY.	1	
20-1	709161	709161	709161	709161	709161	709161	RESET BUTTON	1	
20-2	640005	640005	640005	640005	640005	640005	O-RING	1	
20-3	682704	682704	682704	682704	682704	682704	BOLT	4	
20-4	771241	771241	771241	771241	771241	771241	PACKING	1	
20-5	715961	715961	715961	715961	715961	715961	PLAIN WASHER	1	
20-6	802400	802400	802400	802400	802400	802400	C SPOOL VALVE ASSY.	1	
20-6-seal	771053	771053	771053	771053	771053	771053	SEAL RING	5	
20-7	710221	710221	710221	710221	710221	710221	CAP A	1	
20-8	771240	771240	771240	771240	771240	771240	GASKET	2	
20-10	711639	711639	711639	711639	711639	711639	VALVE BODY	1	
20-11	803931	803931	803931	803931	803931	803931	SLEEVE ASSY.	1	
20-11-*1	771080	771080	771080	771080	771080	771080	O-RING	6	
20-13	771914	771914	771914	771914	771914	771914	CUSHION	1	
20-15	709305	709305	709305	709305	709305	709305	CAP B	1	
20-16	682262	682262	682262	682262	682262	682262	BOLT	4	
21	682265	682265	682265	682265	682265	682265	BOLT	6	
22	686968	686968	686968	686968	686968	686968	BALL VALVE	1	
24	771056	771056	771056	771056	771056	771056	GASKET	1	
25	804697	804697	804697	804697	804697	804697	SILENCER	1	
26	611148	611148	611148	611148	611148	611148	BOLT	4	
27	682276	682276	682276	682276	682276	682276	NUT WITH FLANGE	4	
28	709157	709157	709157	709157	709157	709157	PUMP BASE	2	
29	770551	770551	770551	770551	770551	770551	CUSHION	4	
30	716225	716225	716225	716225	716225	716225	CENTER DISK (air side)	2	
31	716226	716226	716226	716226	716226	716226	WASHER (air side)	2	
KIT	K20-MC-1	K20-ME-1	K20-MH-1	K20-MN-1	K20-MS-1	K20-MV-1	LIQUID SIDE KIT		
KIT	K225-AM						AIR MOTOR KIT		

**Air Operated Double Diaphragm Pump**



**Tightening torque for center rod and out chambers.**

Center Rod	29 ft-lbf {40 N-m}
Out Chambers C/N/E/V	8 ft-lbf {10 N-m}
Out Chambers H/S	10 ft-lbf {13 N-m}

**Tightening torque for manifold retainer bolts.**

BSC/E/H/N/S/V	8 ft-lbf {10 N-m}
---------------	-------------------

**General Tools:**

- Socket wrenches - 10mm, 12mm, 13mm, 17mm, 22mm
- Hexagonal box wrench - 5mm
- Open-end wrenches - 22mm

**Special Tools:**

- Sleeve remover (713148)

**Miscellaneous:**

- Assembly Oil - turbine oil class 1 - no additives (equivalent to ISO VGA32 grade)
- Nuts - M14 x 1.5
- Urea grease grade (NLGI) No. 2
- Lubricants equivalent to (Loctite Anti-Seize 767)

<b>Customer Notes</b>	
Model #:	_____
Description:	_____
Serial #:	_____
Date Installed:	_____
Department Location:	_____
Tag/Project:	_____