

# EXPLODED VIEW & PARTS LISTING

## Air Operated Double Diaphragm Pump

Model: NDP-20BS[x]-PP

Stainless Steel Series

(rubber fitted w/non-metallic center body)



### To Purchase:

☎ 800-990-7867

✉ sales@yamadapump.com

📍 Find My Rep

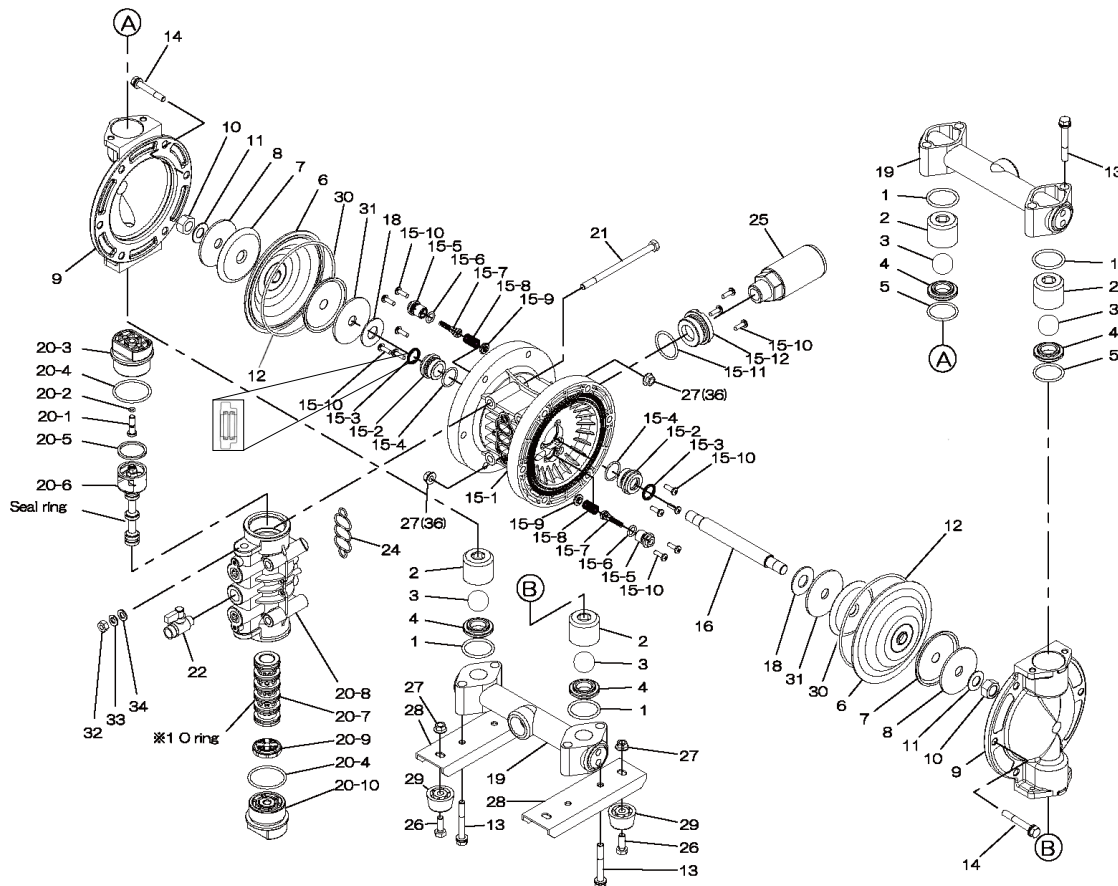
### More Information:

▶ YouTube: @yamadapump

🌐 yamadapump.com

Data Sheets | CAD Drawings | Manuals  
Literature | BOM | Performance Curves

### Trial Program



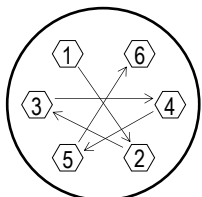
Air Operated Double Diaphragm Pump

(rubber fitted w/non-metallic center body)

	NDP-20BSC-PP	NDP-20BSE-PP	NDP-20BSH-PP	NDP-20BSN-PP	NDP-20BSS-PP	NDP-20BSV-PP			
	854073	854075	854078	854074	854079	854076			
REF. No.	PART No.	PART No.	PART No.	PART No.	PART No.	PART No.	DESCRIPTION	QTY.	REORDER
1	640036	684118	640036	640036	684118	642036	O-RING	4	
2	711701	711701	711701	711701	711701	711701	BALL GUIDE	4	
3	770705	770723	773126	770720	773170	770726	BALL	4	
4	711705	711705	711705	711705	711705	711705	VALVE SEAT	4	
5	640132	684117	640132	640132	684117	642132	O-RING	2	
6	772957	772959	771362	772958	771973	772960	DIAPHRAGM	2	
7	709153	709153	709153	709153	709153	709153	CENTER DISK (OUTER)	2	
8	709152	709152	709152	709152	709152	709152	WASHER	2	
9	711693	711693	711693	711693	711693	711693	OUT CHAMBER	2	
10	682263	682263	682263	682263	682263	682263	NUT	2	
11	682730	682730	682730	682730	682730	682730	CONED DISK SPRING	2	
12	-	-	640151	-	640151	-	O-RING	2	
13	686360	686360	686360	686360	686360	686360	BOLT	8	
14	686358	686358	686358	686358	686358	686358	BOLT	12	
15	804603	804603	804603	804603	804603	804603	BODY ASSY.	1	
15-1	772928	772928	772928	772928	772928	772928	BODY	1	
15-2	780326	780326	780326	780326	780326	780326	THROAT BEARING	2	
15-3	685414	685414	685414	685414	685414	685414	V-PACKING	2	
15-4	685276	685276	685276	685276	685276	685276	O-RING	2	
15-5	772932	772932	772932	772932	772932	772932	VALVE SEAT	2	
15-6	640009	640009	640009	640009	640009	640009	O-RING	2	
15-7	802360	802360	802360	802360	802360	802360	PILOT VALVE ASSY.	2	
15-8	708666	708666	708666	708666	708666	708666	SPRING	2	
15-9	772948	772948	772948	772948	772948	772948	SPRING SEAT	2	
15-10	686030	686030	686030	686030	686030	686030	TAPPING SCREW	13	
15-11	640132	640132	640132	640132	640132	640132	O-RING	1	
15-12	772933	772933	772933	772933	772933	772933	BUSHING	1	
16	709163	709163	709163	709163	709163	709163	CENTER ROD	1	
18	771054	771054	771054	771054	771054	771054	CUSHION	2	
19	831270	831270	831270	831270	831270	831270	MANIFOLD	2	
20	804608	804608	804608	804608	804608	804608	VALVE BODY ASSY.	1	
20-1	772991	772991	772991	772991	772991	772991	RESET BUTTON	1	
20-2	640002	640002	640002	640002	640002	640002	O-RING	1	
20-3	772946	772946	772946	772946	772946	772946	CAP A	1	
20-4	640043	640043	640043	640043	640043	640043	O-RING	2	
20-5	771241	771241	771241	771241	771241	771241	PACKING	1	
20-6	802400	802400	802400	802400	802400	802400	C-SPOOL ASSY.	1	
20-6-seal	771053	771053	771053	771053	771053	771053	SEAL RING	5	
20-7	804609	804609	804609	804609	804609	804609	SLEEVE ASSY.	1	
20-7-*1	686029	686029	686029	686029	686029	686029	O-RING	6	
20-8	832903	832903	832903	832903	832903	832903	VALVE BODY	1	
20-9	771914	771914	771914	771914	771914	771914	CUSHION	1	
20-10	772947	772947	772947	772947	772947	772947	CAP B	1	
21	686031	686031	686031	686031	686031	686031	BOLT	4	
22	686968	686968	686968	686968	686968	686968	BALL VALVE	1	
24	772848	772848	772848	772848	772848	772848	GASKET	1	
25	804697	804697	804697	804697	804697	804697	MUFFLER	1	
26	611148	611148	611148	611148	611148	611148	BOLT	4	
27	682276	682276	682276	682276	682276	682276	NUT W/FLANGE	16	
28	709157	709157	709157	709157	709157	709157	BASE	2	
29	770551	770551	770551	770551	770551	770551	FOOT RUBBER	4	
30	716225	716225	716225	716225	716225	716225	CENTER DISK (INNER)	2	
31	716226	716226	716226	716226	716226	716226	WASHER	2	
32	683635	683635	683635	683635	683635	683635	NUT	4	
33	681300	681300	681300	681300	681300	681300	SPRING WASHER	4	
34	631329	631329	631329	631329	631329	631329	FLAT WASHER	4	
36	686032	686032	686032	686032	686032	686032	NUT W/FLANGE	12	
KIT	K20-MC-1	K20-ME-1	K20-MH-1	K20-MN-1	K20-MS-1	K20-MV-1	LIQUID SIDE KIT		
KIT	K225-AP						AIR MOTOR KIT		

**Air Operated Double Diaphragm Pump**

*(rubber fitted w/non-metallic center body)*



**Tightening torque for center rod and out chambers.**

Center Rod	29 ft-lbf {40 N-m}
Out Chambers C/N/E/V	8 ft-lbf {10 N-m}
Out Chambers H/S	10 ft-lbf {13 N-m}

**Tightening torque for manifold retainer bolts.**

C/E/N/V	8 ft-lbf {10 N-m}
S/H	15 ft-lbf {20 N-m}

**General Tools:**

- Socket wrench - 10mm, 12mm, 13mm, 17mm, 22mm
- Hexagonal box wrench - 5mm
- Open-end wrench - 12mm, 13mm, 22mm
- Adjustable angle wrenches
- Phillips head screw driver

**Special Tool (sold separately):**

- Sleeve remover (713148)

**Miscellaneous:**

- Assembly Oil - turbine oil none additional class 1 (equivalent to ISO VG32 grade)
- Nuts - M14 x 1.5
- Urea grease grade (NLGI) No. 2

**Customer Notes**

Model #: \_\_\_\_\_  
 Description: \_\_\_\_\_  
 Serial #: \_\_\_\_\_  
 Date Installed: \_\_\_\_\_  
 Department Location: \_\_\_\_\_  
 Tag/Project: \_\_\_\_\_