

# EXPLODED VIEW & PARTS LISTING

## Air Operated Double Diaphragm Pump

Model: NDP-20BPT-PP

Part # 854098 - NPT

Part # 854112 - Flange



### To Purchase:

☎ 800-990-7867

✉ sales@yamadapump.com

📍 Find My Rep

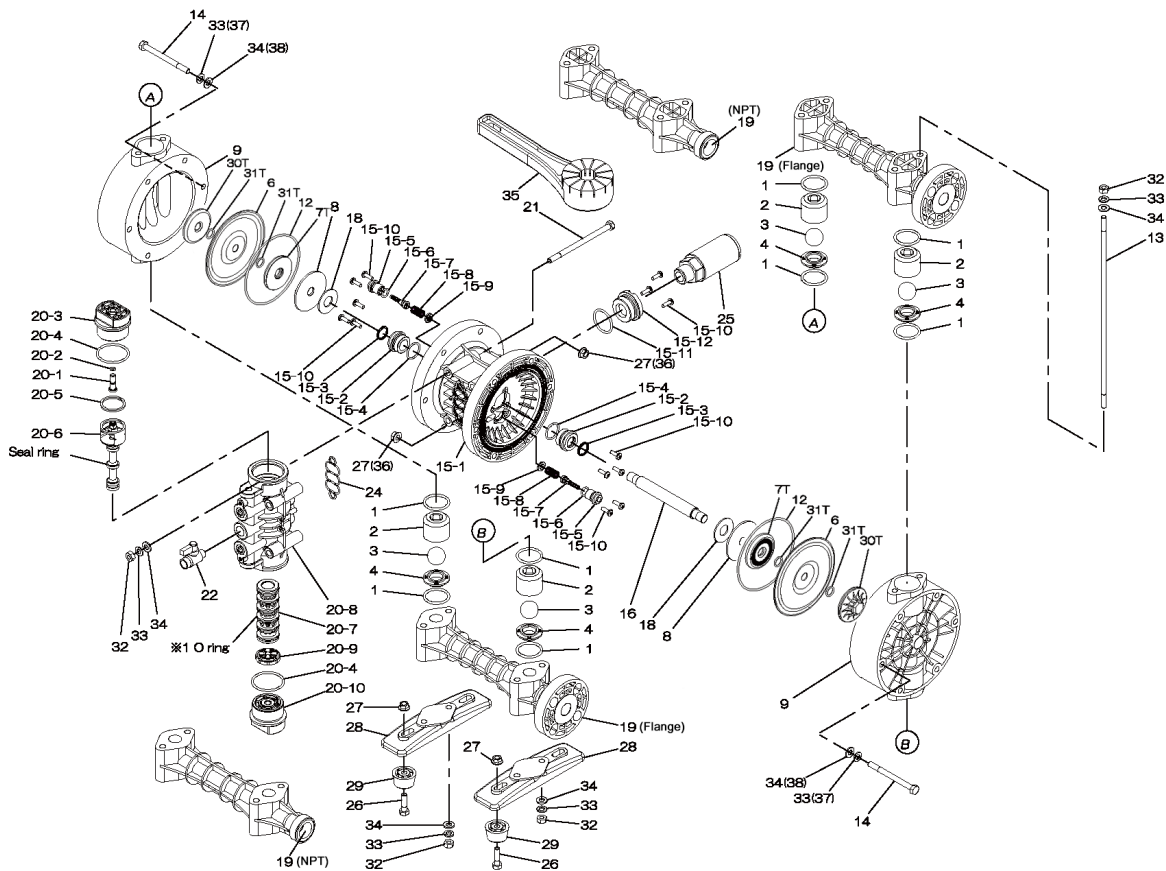
### More Information:

▶ YouTube: @yamadapump

🌐 yamadapump.com

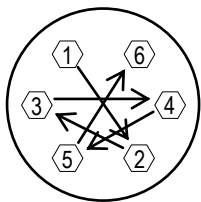
Data Sheets | CAD Drawings | Manuals  
Literature | BOM | Performance Curves

### Trial Program



Ref. No.	Description	Qty.	Part No.	Reorder
1	O-RING	8	643033	
2	BALL GUIDE	4	771216	
3	BALL	4	770736	
4	VALVE SEAT	4	780137	
6	DIAPHRAGM	2	771083	
7T	CENTER DISK	2	709456	
9	OUT CHAMBER	2	780134	
12	O-RING	2	640151	
13	TIE ROD	4	710122	
14	BOLT	12	621166	
15	CENTER BODY ASSY.	1	804603	
15-1	BODY	1	772928	
15-2	THROAT BEARING	2	772931	
15-3	V-PACKING	2	685414	
15-4	O-RING	2	685276	
15-5	VALVE SEAT	2	772932	
15-6	O-RING	2	640009	
15-7	PILOT VALVE ASSY.	2	802360	
15-8	SPRING	2	708666	
15-9	SPRING SEAT	2	772948	
15-10	TAPPING SCREW	13	686030	
15-11	O-RING	1	640132	
15-12	BUSHING	1	772933	
16	CENTER ROD	1	710252	
18	CUSHION	2	771054	
19	MANIFOLD (NPT)	2	780010	
19	MANIFOLD (FLANGE)	2	780208	

Ref. No.	Description	Qty.	Part No.	Reorder
20	AIR VALVE BODY ASSY.	1	804608	
20-1	REST BUTTON	1	772991	
20-2	O-RING	1	640002	
20-3	CAP A	1	772946	
20-4	O-RING	2	640043	
20-5	PACKING	1	771241	
20-6	C-SPOOL ASSY.	1	802400	
20-6 seal	SEAL RING	5	771053	
20-7	SLEEVE ASSY.	1	804609	
20-7-*1	O-RING (SLEEVE O.D.)	6	686029	
20-8	VALVE BODY	1	832903	
20-9	CUSHION	1	771914	
20-10	CAP B	1	772947	
21	BOLT	4	686031	
22	BALL VALVE	1	686019	
24	GASKET	1	772848	
25	SILENCER	1	804697	
26	BOLT	4	621151	
27	NUT W/FLANGE	16	686032	
28	PUMP BASE	2	771219	
29	FOOT RUBBER	4	770551	
30T	CENTER DISK (AIR SIDE)	2	780124	
31T	O-RING	4	643013	
32	NUT	12	683635	
33	SPRING WASHER	24	681300	
34	WASHER FLAT	24	631329	
35	TOOL	2	771244	
KIT	K20-PT-PP	LIQUID SIDE		
KIT	K225-AP	AIR MOTOR		



**Tightening torque for center rod and out chambers.**

Center Rod 29 ft-lbf {40 N-m}  
 Out Chambers 10 ft-lbf {13 N-m}

**Tightening torque for manifold tie rods.**

BPT-PP 9 ft-lbf {12 N-m}

**General Tools:**

- Socket wrenches - 10mm, 12mm, 13mm, 17mm, 22mm
- Hexagonal box wrench - 5mm
- Open-end wrenches - 12mm, 13mm, 22mm
- Adjustable angle wrenches
- Phillips head screw driver

**Special Tools:**

- Accessory tool (771244) used to remove center disk.
- Sleeve remover (713148) used to remove sleeves (sold separately).

**Miscellaneous:**

- Assembly Oil - turbine oil none additional class 1 (equivalent to ISA VGA32 grade)
- Nuts - M14 x 1.5
- Urea grease grade (NLGI) No. 2

Note: 804646 includes Center Body Assembly & Air Valve Assembly

Customer Notes	
Model #:	_____
Description:	_____
Serial #:	_____
Date Installed:	_____
Department Location:	_____
Tag/Project:	_____