

NDP-15 Specifications

Port Dimensions (13.5 GPM Max.)

Intake & discharge connection:

Polypropylene (PPG) ■	1/2" Female NPT
Kynar® (PVDF) ◆	1/2" Female NPT
Groundable Acetal ◆	1/2" Female NPT
Aluminum (ADC-12) ▲	1/2" Female NPT
Stainless Steel (316) ▲	1/2" Female NPT
Air inlet (includes ball valve):	1/4" Female NPT
Air exhaust (internal silencer):	3/8" Female NPT

- Polypropylene pumps may be fitted with ball or flat check valves. Ball-type check valves are recommended for flooded suction applications. Flat-type check valves are recommended for suction lift applications.
- ◆ Kynar® and Groundable Acetal pumps are fitted with flat check valves only.
- ▲ Aluminum and Stainless Steel pumps are fitted with ball check valves only.

Maximum Liquid Temperature*

Diaphragm Material	Temperature
Buna N	180°F (82°C)
Neoprene	180°F (82°C)
Santoprene® (TPO)	180°F (82°C)
PTFE	212°F (100°C)
Hytre® (TPEE)	248°F (120°C)
Viton® fluoroelastomer	248°F (120°C)

*The maximum liquid temperature for metal and Kynar® fitted pumps is determined by the elastomer (diaphragm material). Polypropylene and Groundable Acetal pumps have a maximum liquid temperature of 180°F (82°C) regardless of diaphragm material.

Air Supply Pressure (All Models)

20 – 100 PSI (1.4 – 7 kfg/cm)

Discharge Volume Per Cycle

0.0338 gallons (128 cc)

Maximum Cycles Per Minute

All diaphragms: 400

Maximum Size Solid: 1/32" (1 mm)

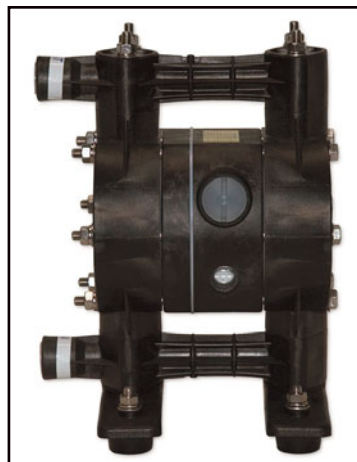
Maximum Dry Suction Lift

Flat-type check valve: 8-feet

Ball-type check valve: 5-feet

Pump Air Motor: Ryton® air motor standard

Notes: Hytre® fitted pumps include Buna N wetted o-rings. Santoprene® fitted pumps include EPDM wetted o-rings.



Aluminum

Dimensions: 8.66"Lx5.71"Wx10.67"H

Net Wt.: 9.04 lbs.

Shipping Wt.: 11.04 lbs.

Stainless Steel

Dimensions: 8.31"Lx5.71"Wx9.72"H

Net Wt.: 13.9 lbs.

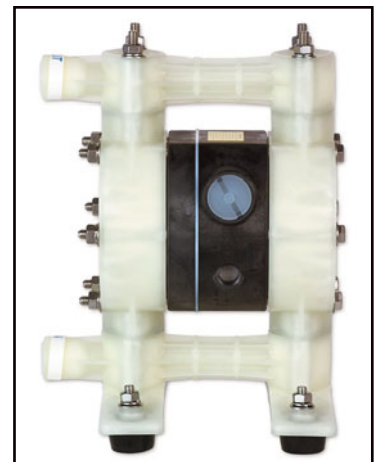
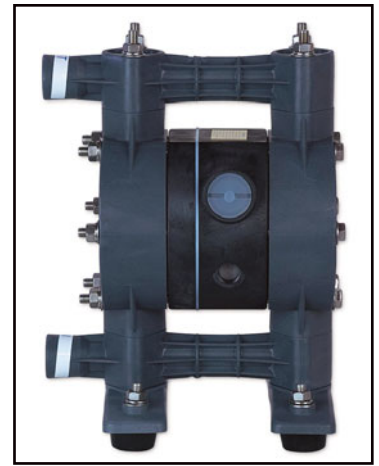
Shipping Wt.: 15.9 lbs.

Kynar® (PVDF)

Dimensions: 8.66"Lx7.09"Wx11.69"H

Net Wt.: 9.46 lbs.

Shipping Wt.: 11.46 lbs.



Groundable Acetal

Dimensions: 8.66"Lx7.09"Wx11.69"H

Net Wt.: 9.46 lbs.

Shipping Wt.: 11.46 lbs.

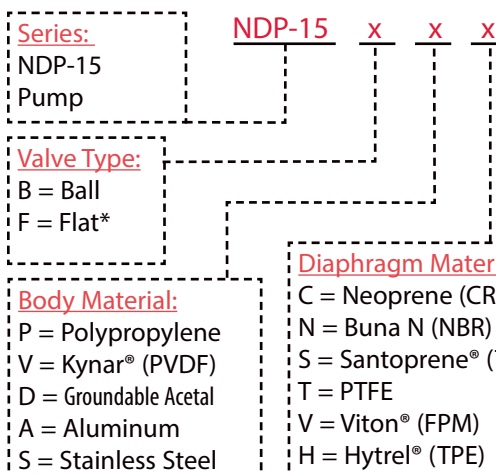
Polypropylene

Dimensions: 8.66"Lx7.09"Wx11.69"H

Net Wt.: 7.7 lbs.

Shipping Wt.: 9.5 lbs.

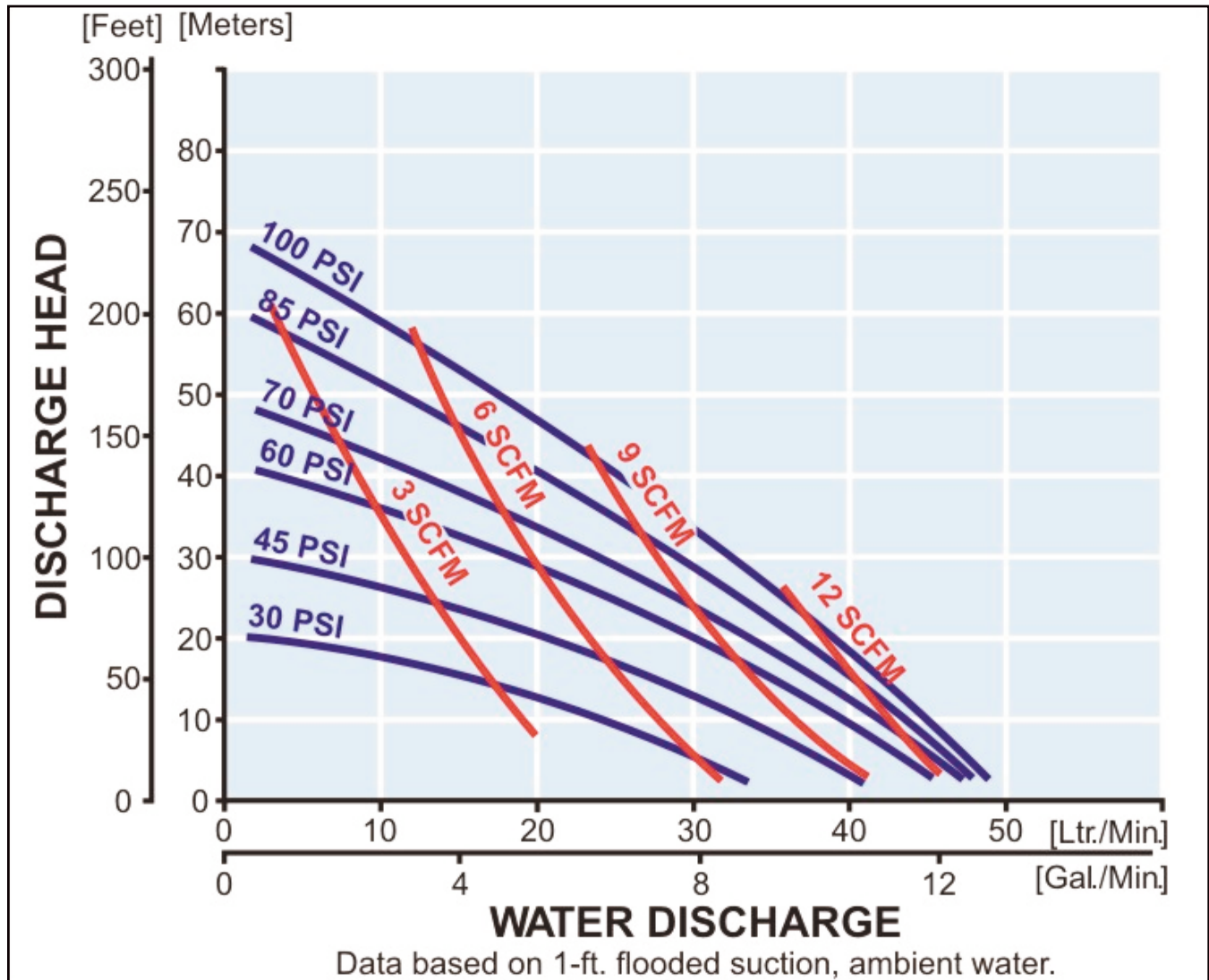
Model Number Nomenclature



* Flat valves are available for plastic pumps only.

NDP-15 Performance Curve – All Valves

All Diaphragm Materials



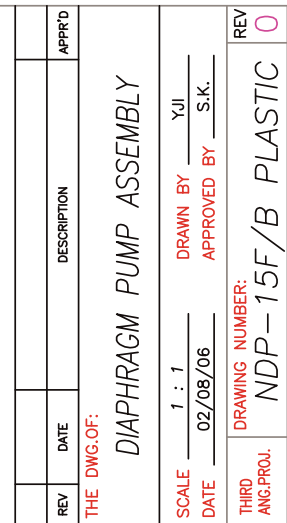
To calculate performance for Santoprene® and Hytrel®-fitted pumps, use Rubber Diaphragm Curve.



THIS IS A CAD DRAWING AND MUST NOT BE ALTERED MANUALLY.



THIS IS A CAD DRAWING AND MUST NOT BE ALTERED MANUALLY.



THIS IS A CAD DRAWING AND MUST NOT BE ALTERED MANUALLY.

AutoCAD® is a registered trademark of Autodesk, Inc.

Hytrel® is a registered trademark of E.I. du Pont de Nemours and Company.

Kynar® is a registered trademark of Arkema.

Nordel™ is a trademark of DuPont Dow Elastomers.

Ryton® is a registered trademark of Chevron Phillips Chemical Company.

Santoprene® is a registered trademark of Advanced Elastomer Systems.

Swagelok® & VCR® are trademarks of the Swagelok Companies.

Viton® is a registered trademark of DuPont Performance Elastomers.

Due to Yamada's continued commitment to product improvement, specifications may change without notice.