

# EXPLODED VIEW & PARTS LISTING

## Air Operated Double Diaphragm Pump

Model: NDP-25 Stainless Steel-HP  
High Pressure Pumps



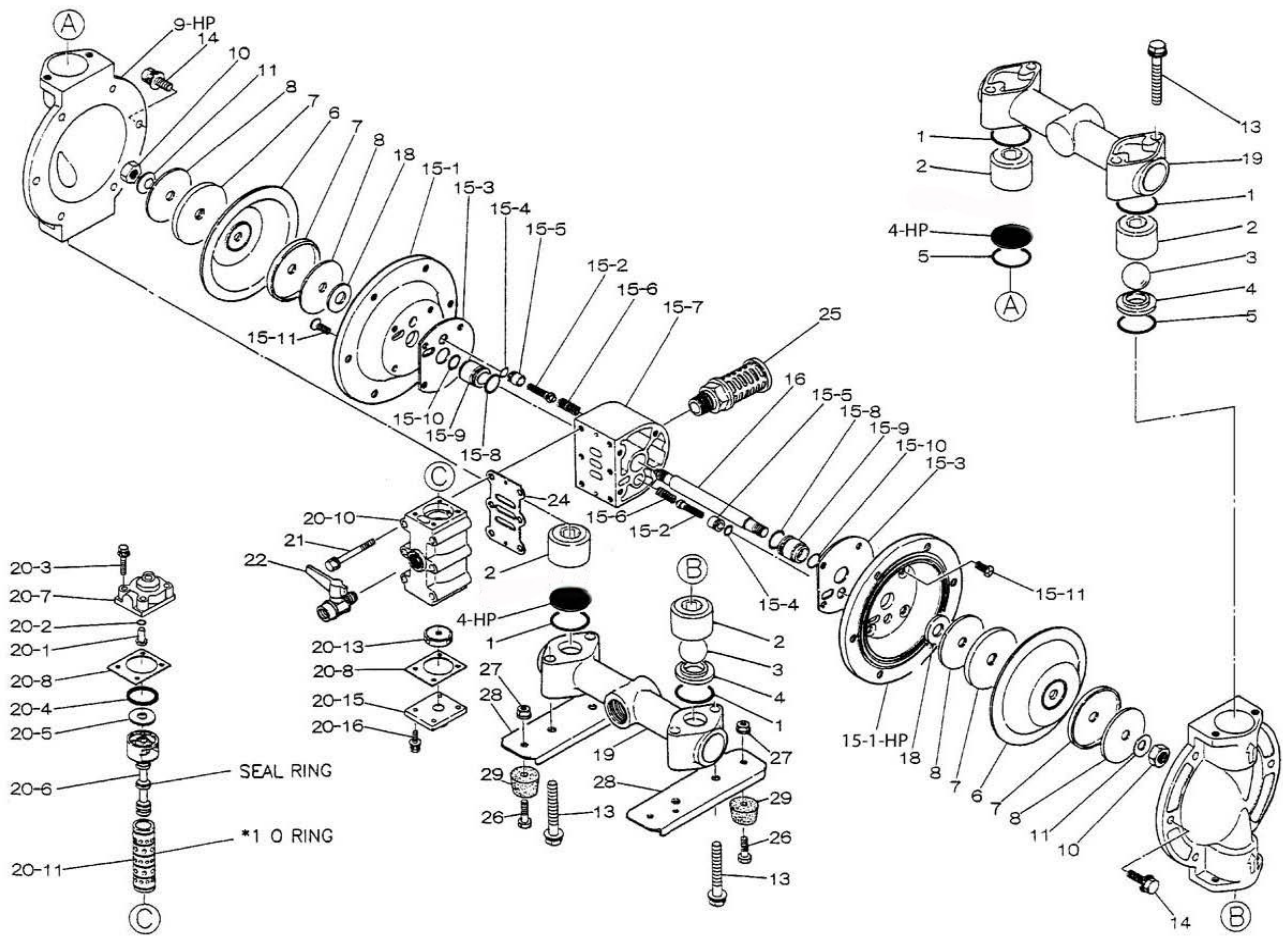
### To Purchase:

- ☎ 800-990-7867
- ✉ sales@yamadapump.com
- 📍 Find My Rep

### More Information:

- ▶ YouTube: @yamadapump
- 🌐 yamadapump.com
- Data Sheets | CAD Drawings | Manuals Literature | BOM | Performance Curves

### Trial Program



## Air Operated Double Diaphragm Pump

	NDP-25BSC-HP	NDP-25BSN-HP	NDP-25BSE-HP	NDP-25BSV-HP	NDP-25BSH-HP	NDP-25BSS-HP			
REF No.	PARTS No.	PARTS No.	PARTS No.	PARTS No.	PARTS No.	PARTS No.	DESCRIPTION	QTY.	REORDER
	851537-HP	851538-HP	851539-HP	851540-HP	852102-HP	852703-HP	Hi-Pressure Pumps		
1	640044	640044	683997	642044	640044	683997	O-RING	4	
2	711703	711703	711703	711703	711703	711703	VALVE STOPPER	4	
3	770556	770581	770590	770599	773127	770590	BALL	2	
4	711707	711707	711707	711707	711707	711707	VALVE SEAT	2	
4-HP	711707-HP	711707-HP	711707-HP	711707-HP	711707-HP	711707-HP	VALVE SEAT - HP	2	
5	640134	640134	683996	642134	640134	683996	O-RING	2	
6	772961	772962	772963	772964	771363	771974	DIAPHRAGM	2	
7	716258	716258	716258	716258	716258	716258	CENTER DISK	4	
8	716259	716259	716259	716259	716259	716259	PLAIN WASHER	4	
9	711964	711964	711964	711964	711964	711964	OUT CHAMBER	1	
9-HP	711694-HP	711694-HP	711694-HP	711694-HP	711694-HP	711694-HP	OUT CHAMBER - HP	1	
10	682263	682263	682263	682263	682263	682263	NUT	2	
11	682730	682730	682730	682730	682730	682730	CONED DISK SPRING	2	
12	-	-	-	-	640154	640154	O-RING	2	
13	621185	621185	621185	621185	621185	621185	BOLT	8	
13a	681937	681937	681937	681937	681937	681937	WAVE WASHER	8	
14	621177	621177	621177	621177	621177	621177	BOLT	12	
14a	631937	631937	631937	631937	631937	631937	WAVE WASHER	12	
<b>15</b>	<b>803248-HP</b>	<b>803248-HP</b>	<b>803248-HP</b>	<b>803248-HP</b>	<b>803248-HP</b>	<b>803248-HP</b>	<b>CENTER BODY ASSEMBLY</b>	<b>1</b>	
15-1	715939	715939	715939	715939	715939	715939	AIR CHAMBER	1	
15-1-HP	715939-HP	715939-HP	715939-HP	715939-HP	715939-HP	715939-HP	AIR CHAMBER - HP	1	
15-2	802360	802360	802360	802360	802360	802360	PILOT VALVE ASSEMBLY	2	
15-3	771057	771057	771057	771057	771057	771057	GASKET	2	
15-4	640009	640009	640009	640009	640009	640009	O-RING	2	
15-5	771945	771945	771945	771945	771945	771945	VALVE SEAT	2	
15-6	708666	708666	708666	708666	708666	708666	SPRING	2	
15-7	709812	709812	709812	709812	709812	709812	BODY	1	
15-8	685276	685276	685276	685276	685276	685276	O-RING	2	
15-9	772703	772703	772703	772703	772703	772703	THROAT BEARING	2	
15-10	685414	685414	685414	685414	685414	685414	PACKING	2	
15-11	682486	682486	682486	682486	682486	682486	FLAT HEAD BOLT	8	
16	709162	709162	709162	709162	709162	709162	CENTER ROD	1	
18	771054	771054	771054	771054	771054	771054	CUSHION	2	
19	831271	831271	831271	831271	831271	831271	MANIFOLD	2	
<b>20</b>	<b>802362</b>	<b>802362</b>	<b>802362</b>	<b>802362</b>	<b>802362</b>	<b>802362</b>	<b>VALVE BODY ASSEMBLY</b>	<b>1</b>	
20-1	709161	709161	709161	709161	709161	709161	RESET BUTTON	1	
20-2	640005	640005	640005	640005	640005	640005	O-RING	1	
20-3	682704	682704	682704	682704	682704	682704	BOLT	4	
20-4	771241	771241	771241	771241	771241	771241	PACKING	1	
20-5	715961	715961	715961	715961	715961	715961	PLAIN WASHER	1	
20-6	802400	802400	802400	802400	802400	802400	C SPOOL VALVE ASSEMBLY	1	
20-6-seal	771053	771053	771053	771053	771053	771053	SEAL RING	5	
20-7	710221	710221	710221	710221	710221	710221	CAP	1	
20-8	771240	771240	771240	771240	771240	771240	GASKET	2	
20-10	711639	711639	711639	711639	711639	711639	VALVE BODY	1	

Air Operated Double Diaphragm Pump

	NDP-25BSC-HP	NDP-25BSN-HP	NDP-25BSE-HP	NDP-25BSV-HP	NDP-25BSH-HP	NDP-25BSS-HP			
REF No.	PARTS No.	PARTS No.	PARTS No.	PARTS No.	PARTS No.	PARTS No.	DESCRIPTION	QTY.	REORDER
	851537-HP	851538-HP	851539-HP	851540-HP	852102-HP	852703-HP	Hi-Pressure Pumps		
20-11	803931	803931	803931	803931	803931	803931	SLEEVE ASSEMBLY	1	
20-11-*1	771080	771080	771080	771080	771080	771080	O-RING	6	
20-13	771914	771914	771914	771914	771914	771914	CUSHION	1	
20-15	709305	709305	709305	709305	709305	709305	CAP	1	
20-16	682262	682262	682262	682262	682262	682262	BOLT	4	
21	682265	682265	682265	682265	682265	682265	BOLT	6	
22	684320	684320	684320	684320	684320	684320	BALL VALVE	1	
24	771056	771056	771056	771056	771056	771056	GASKET	1	
25	804697	804697	804697	804697	804697	804697	SILENCER	1	
26	611148	611148	611148	611148	611148	611148	BOLT	4	
27	682276	682276	682276	682276	682276	682276	NUT WITH FLANGE	4	
28	709157	709157	709157	709157	709157	709157	PUMP BASE	2	
29	770551	770551	770551	770551	770551	770551	CUSHION	4	
KIT	K225-AM						AIR MOTOR		

Not Shown: Hose Assembly with Fittings - contact the Yamada factory.

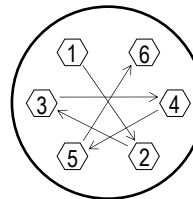
General Tools:

- Socket wrench - 10mm, 12mm, 13mm, 17mm, 22mm
- Hexagonal box wrench - 5mm
- Open-end wrench - 22mm

Miscellaneous:

- Assembly Oil - Turbine oil none additional class 1 (equivalent to ISA VGA32 grade)
- Nuts - M14 x 1.5
- Urea grease grade (NLGI) No. 2
- Lubricants equivalent to (Loctite Anti-Seize 767)

Torque Requirements:



Tightening torque for center rod and out chambers.

- Center Rod 29 ft-lbf {40 N-m}
- Out Chambers (C/N/E/V) 8 ft-lbf {10 N-m}
- Out Chambers (H/S) 15 ft-lbf {20 N-m}

Tightening torque for manifold retainer bolts.  
BS\_ 8 ft-lbf {10 N-m}

Customer Notes

Model #: \_\_\_\_\_  
 Description: \_\_\_\_\_  
 Serial #: \_\_\_\_\_  
 Date Installed: \_\_\_\_\_  
 Department Location: \_\_\_\_\_  
 Tag/Project: \_\_\_\_\_