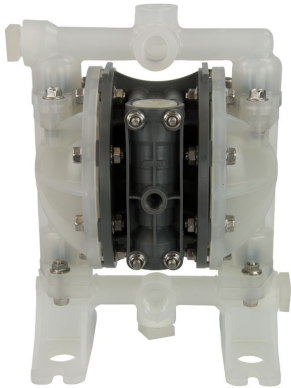


Air Operated Double Diaphragm Pump



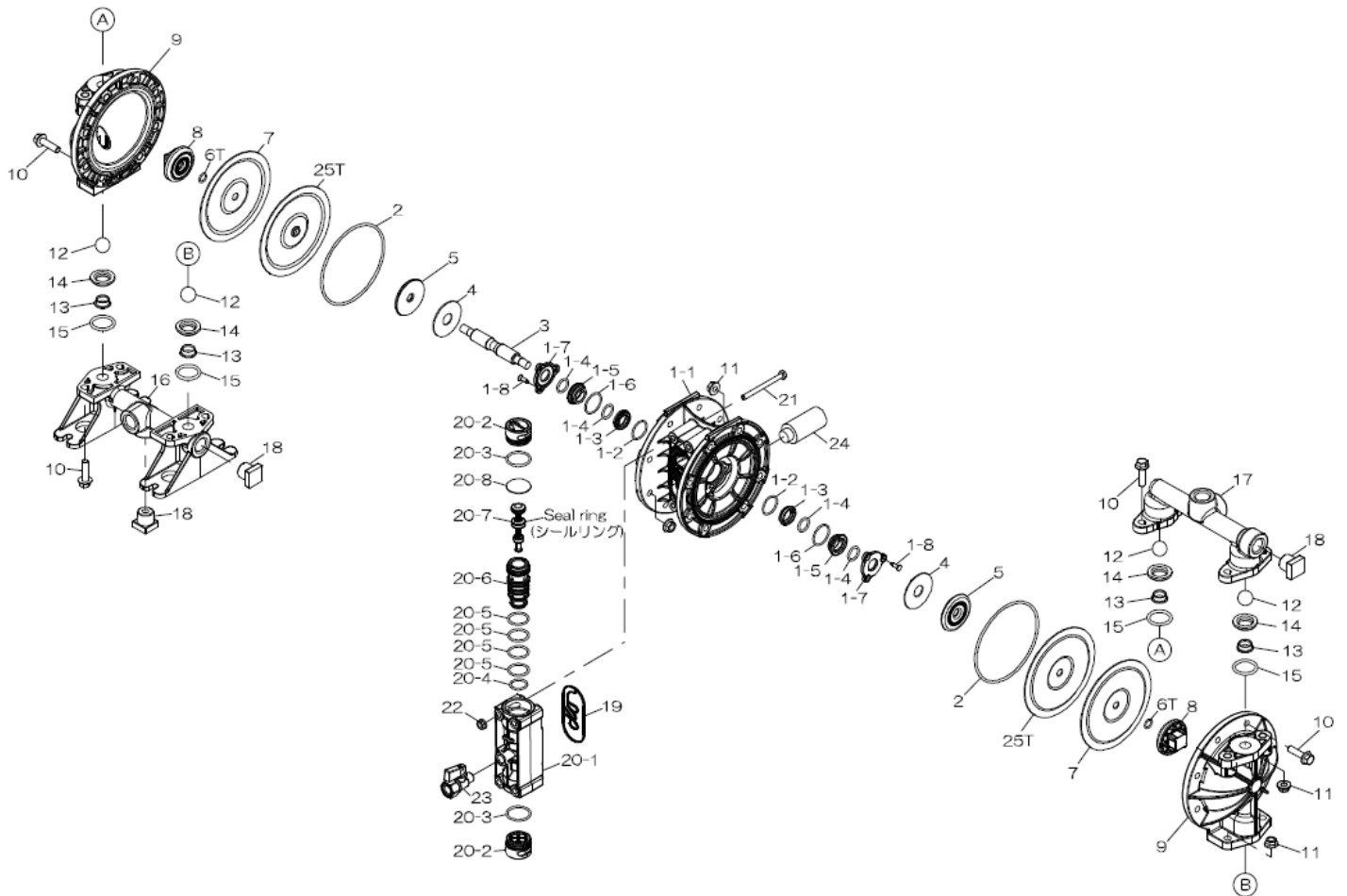
To Purchase:

- 800-990-7867
- sales@yamadapump.com
- Find My Rep

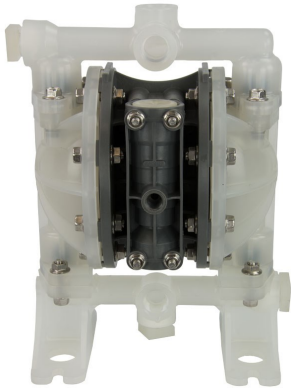
More Information:

- YouTube: @yamadapump
- yamadapump.com
- Data Sheets | CAD Drawings | Manuals
Literature | BOM | Performance Curves*

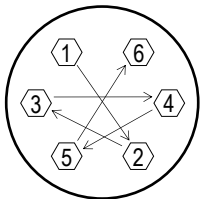
Trial Program



Air Operated Double Diaphragm Pump



| REF. NO. | PART NO. | DESCRIPTION | QTY. | REORDER |
|----------|----------|----------------------------|------|---------|
| 1 | 805217 | BODY ASSY (G15P) NPT | 1 | |
| 1-1 | 773410 | BODY (G15P) NPT | 1 | |
| 1-2 | 686893 | O-RING | 2 | |
| 1-3 | 773385 | GUIDE BUSH A (G15) | 2 | |
| 1-4 | 640015 | O-RING 16MM X 2.5MM B | 4 | |
| 1-5 | 780301 | GUIDE BUSH B (G15) | 2 | |
| 1-6 | 684900 | O-RING 26.2MM X 1.9MM | 2 | |
| 1-7 | 773384 | GUIDE BUSH STOPPER G15 | 2 | |
| 1-8 | 686894 | LONGER TAPPING SCREW | 6 | |
| 2 | 640147 | O-RING INK G110 3.1 X | 2 | |
| 3 | 717100 | CENTER ROD (G15) SUS | 1 | |
| 4 | 773278 | CUSHION (G15) | 2 | |
| 5 | 716923 | CENTER DISC (G15) | 2 | |
| 6T | 643007 | O-RING 9.8MM X 1.9MM | 2 | |
| 7 | 773276 | DIAPHRAGM G15 (PTFE) | 2 | |
| 8 | 773391 | CENTER DISC (G15) | 2 | |
| 9 | 780303 | OUT CHAMBER (G15P) | 2 | |
| 10 | 686892 | BOLT W/ FLANGE | 24 | |
| 11 | 686032 | NUT W/ FLANGE M8X1.25 | 24 | |
| 12 | 773423 | BALL (PTFE) G15 | 4 | |
| 13 | 773430 | SEAT B (G15) | 4 | |
| 14 | 773429 | SEAT A (G15) | 4 | |
| 15 | 643025 | O-RING 25.7MM X 3.5MM | 4 | |
| 16 | 780307 | MANIFOLD B (G15P) NPT | 1 | |
| 17 | 773395 | MANIFOLD A (G15P) NPT | 1 | |
| 18 | 773393 | PLUG (G15) NPT | 3 | |
| 19 | 773407 | GASKET (G15) | 1 | |
| 20 | 805210 | VALVE BODY ASSY. (G15) | 1 | |
| 20-1 | 780300 | VALVE BODY (G15) NPT | 1 | |
| 20-2 | 773383 | CAP (G15) | 2 | |
| 20-3 | 683112 | O-RING | 2 | |
| 20-4 | 685453 | O-RING JASO-2019 | 1 | |
| 20-5 | 685276 | O-RING 23.3MMX2.4MM | 4 | |
| 20-6 | 780302 | SLEEVE (G15) | 1 | |
| 20-7 | 805208 | SPOOL ASSY. (G15) | 1 | |
| 20-8 | 773428 | CUSHION (G15) | 1 | |
| 21 | 621115 | BOLT M6X1X70 (SUS304) | 4 | |
| 22 | 684086 | FLANGE NUT SERRATED M6X1.0 | 4 | |
| 24 | 686762 | SILENCER NPT 3/8" | 1 | |
| 25T | 773447 | DIAPHRAGM BACKUP G15TP | 2 | |



Tightening torque for center rod and out chambers.
 Center Rod 177 in-lbf {20 N-m}
 Out Chambers 89 in-lbf {10 N-m}

Tightening torque for manifold retainer bolts.
 PT 89 in-lbf {10 N-m}

General Tools:

- Socket wrench - 10mm, 12mm
- Hexagonal box wrenches - 5mm
- Open-end wrench - 12mm, 22mm
- Phillips head screw driver
- Pliers

Miscellaneous:

- Assembly Oil—turbine oil none additional class 1 (equivalent to ISO VGA32 grade)
- Urea grease grade (NLGI) No. 2
- Thread locking agent (equivalent to LOCTITE® 222)

| Customer Notes | |
|----------------------|-------|
| Model #: | _____ |
| Description: | _____ |
| Serial #: | _____ |
| Date Installed: | _____ |
| Department Location: | _____ |
| Tag/Project: | _____ |