

EXPLODED VIEW & PARTS LISTING

Air Operated Double Diaphragm Pump

Model: G15AT
Part # 854701



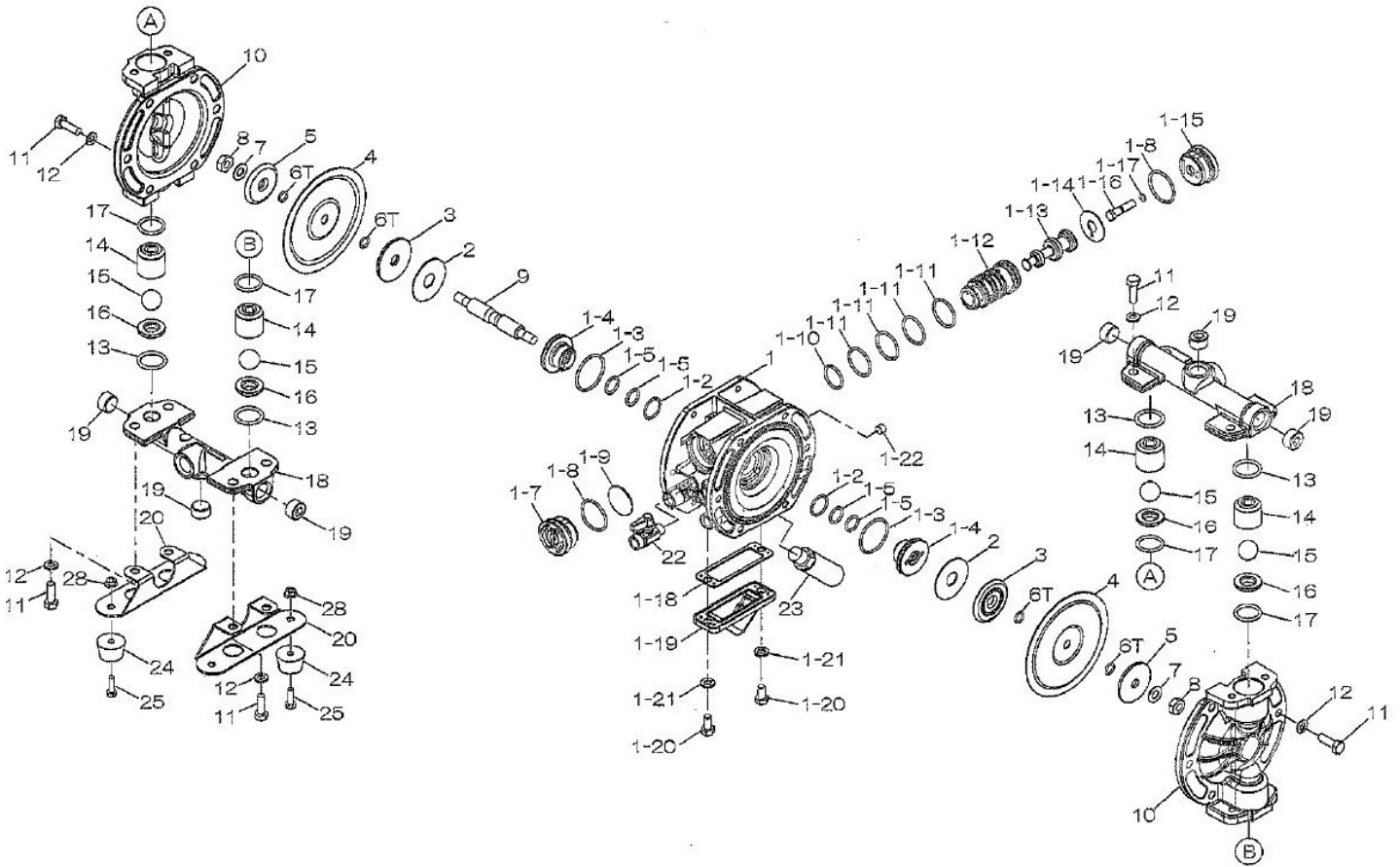
To Purchase:

- ☎ 800-990-7867
- ✉ sales@yamadapump.com
- 📍 Find My Rep

More Information:

- ▶ YouTube: @yamadapump
- 🌐 yamadapump.com
- Data Sheets | CAD Drawings | Manuals Literature | BOM | Performance Curves*

Trial Program



Air Operated Double Diaphragm Pump



Ref. No.	Description	Qty.	Part No.	Reorder
1	Body Assy.	1	805130	
2	Cushion	2	773278	
3	Center Disk	2	716923	
4	Diaphragm	2	773276	
5	Center Disk	2	716924	
6T	O-ring	2	643007	
7	Lock Washer M10 SS	2	681303	
8	Nut M10x1.50	2	683636	
9	Center Rod	1	716925	
10	Out Chamber	2	716920	
11	Bolt	20	611149	
12	Wave Washer	20	631916	
13	O-ring	4	643025	
14	Ball Guide	4	716921	
15	Ball	4	771524	
16	Valve Seat 15AL	4	711227	
17	O-ring	4	643130	
18	Manifold	2	717084	
19	Plug 1/2" NPT	6	686789	
20	Base	2	716926	
22	Ball Valve	1	683055	
23	Silencer	1	682520	
24	Foot Rubber	4	771123	
25	Bolt M6x1.0x20	4	611101	
28	Nut w/Flange M6x1.0	4	682817	

Repair Kits

KG15-AT Liquid Side Kit includes the following:

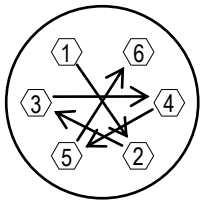
Ref. No.	Description	Qty.	Part No.	Reorder
4	Diaphragm	2	773276	
6T	O-ring	2	643007	
13	O-ring	4	643025	
15	Ball	4	771524	
17	O-ring	4	643130	

KG15AM-M Side Kit includes the following:

Ref. No.	Description	Qty.	Part No.	Reorder
1-2	O-ring	2	684725	
1-3	O-ring	2	686733	
1-5	O-ring	4	640015	
1-8	O-ring	2	686734	
1-9	Cushion	1	773280	
1-11	O-ring	4	686029	
1-13	Spool Assembly	1	805131	
1-14	Cushion	1	773281	
1-17	O-ring	1	640002	
1-18	Gasket	1	773283	

Body Assembly

Ref. No.	Description	Qty.	Part No.	Reorder
1-1	Body	1	717082	
1-2	O-ring	2	684725	
1-3	O-ring	2	686733	
1-4	Guide Bush	2	773279	
1-5	O-ring	4	640015	
1-7	Cap A	1	716917	
1-8	O-ring	2	686734	
1-9	Cushion	1	773280	
1-10	O-ring	1	685276	
1-11	O-ring	4	686029	
1-12	Sleeve	1	716950	
1-13	Spool Assy.	1	805131	
1-14	Cushion	1	773281	
1-15	Cap B	1	716918	
1-16	Reset Button	1	717035	
1-17	O-ring	1	640002	
1-18	Gasket	1	773283	
1-19	Cover	1	717083	
1-20	Wave Washer	2	631916	
1-21	Bolt 8x1.25x16	2	611145	
1-22	Plug 1/8"	1	634360	



Tightening torque for center rod and out chambers.

Center Rod 122 in-lbf {14 N-m}
Out Chambers 105 in-lbf {12 N-m}

Tightening torque for manifold retainer bolts.

BA_ 105 in-lbf {12 N-m}

General Tools:

- Socket wrench - 13mm
- Hexagonal box wrenches - 5mm
- Open-end wrench - 21mm
- Snap ring pliers

Miscellaneous:

- Assembly Oil—turbine oil none additional class 1 (equivalent to ISA VGA32 grade)
- Urea grease grade (NLGI) No. 2

Customer Notes

Model #: _____
 Description: _____
 Serial #: _____
 Date Installed: _____
 Department Location: _____
 Tag/Project: _____