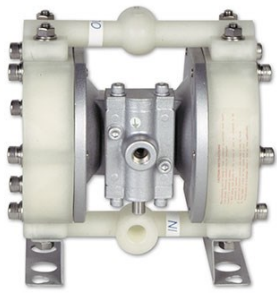


# EXPLODED VIEW & PARTS LISTING

## Air Operated Double Diaphragm Pump

Model: DP-10BP[x]  
Polypropylene Series



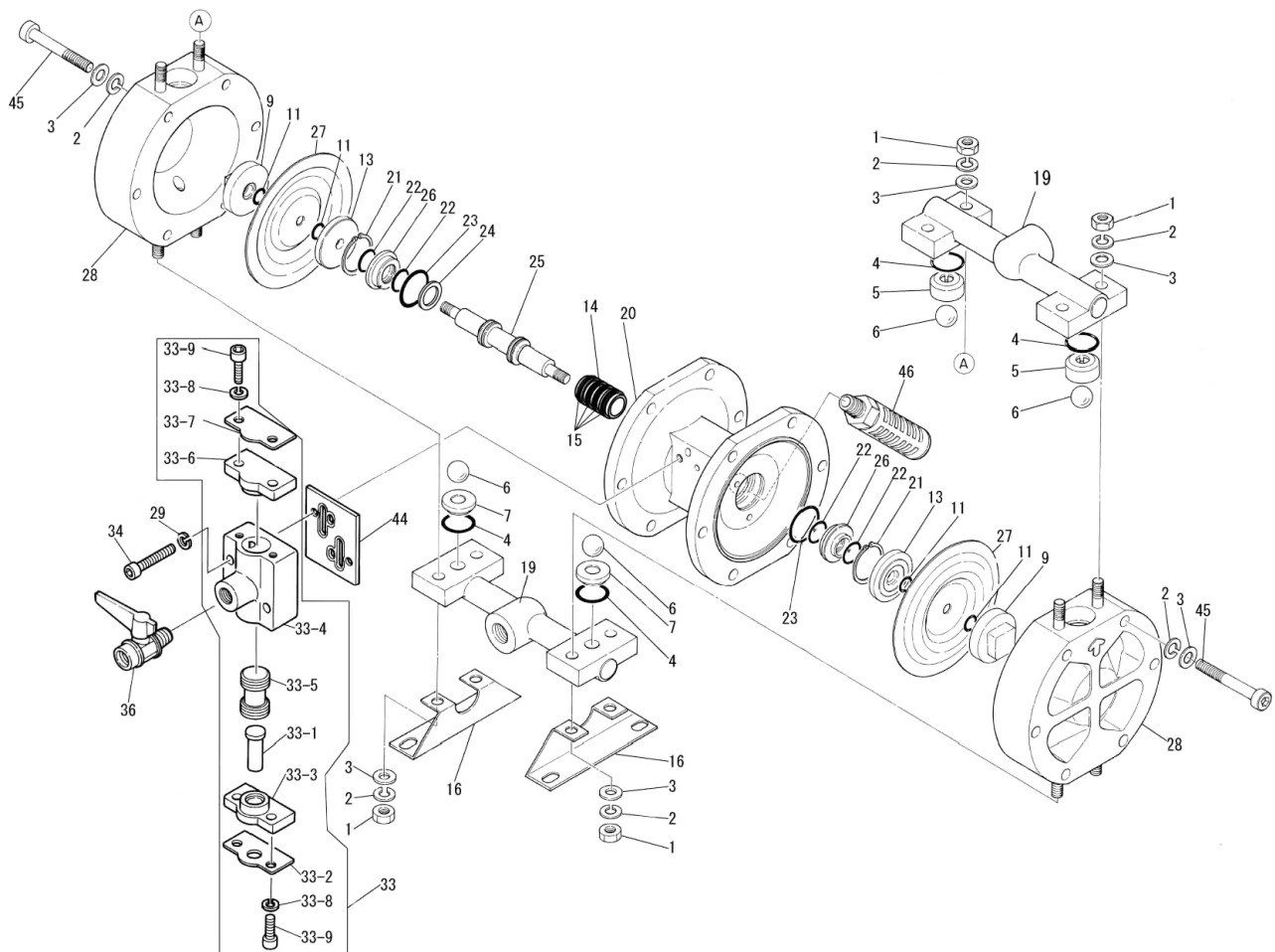
### To Purchase:

- ☎ 800-990-7867
- ✉ sales@yamadapump.com
- 📍 [Find My Rep](#)

### More Information:

- ▶ [YouTube: @yamadapump](#)
- 🌐 [yamadapump.com](#)
- [Data Sheets](#) | [CAD Drawings](#) | [Manuals Literature](#) | [BOM](#) | [Performance Curves](#)

### Trial Program



## Air Operated Double Diaphragm Pump

	DP-10BPC	DP-10BPN	DP-10BPH	DP-10BPS	DP-10BPT			
	851844	852388	851849	852679	851843			
REF. No.	PART No.	PART No.	PART No.	PART No.	PART No.	DESCRIPTION	QTY.	REORDER
1	687229	687229	687229	687229	687229	NUT	8	
2	681300	681300	681300	681300	681300	SPRING LOCK WASHER	8	
3	631329	631329	631329	631329	631329	PLAIN WASHER	8	
4	640018	640018	640018	684112	643018	O-RING	4	
5	771136	771136	771136	771136	771136	VALVE STOPPER	2	
6	770970	770972	773124	773168	770931	BALL	4	
7	770975	770976	780270*	780270*	780270*	VALVE SEAT	2	
9	770968	770968	770968	770968	770968	CENTER DISK (OUTER)	2	
11	640005	640005	-	-	643005	O-RING	4	
13	708770	708770	708770	708770	708770	CENTER DISK (INNER)	2	
14	714678	714678	714678	714678	714678	SLEEVE	1	
15	684900	684900	684900	684900	684900	O-RING	4	
16	708511	708511	708511	708511	708511	PUMP BASE	2	
19	831316	831316	831316	831316	831316	MANIFOLD	2	
20	715107	715107	715107	715107	715107	BODY	1	
21	630807	630807	630807	630807	630807	RETAINING RING R TYPE	2	
22	684284	684284	684284	684284	684284	PACKING	4	
23	640131	640131	640131	640131	640131	O-RING	2	
24	772651	772651	772651	772651	772651	SPACER	1	
25	801785	801785	801785	801785	801785	CENTER ROD ASSY.	1	
26	772619	772619	772619	772619	772619	GUIDE BUSH	2	
27	770971	770973	771372	771972	770933	DIAPHRAGM	2	
28	780194	780194	780194	780194	780194	OUT CHAMBER	2	
29	681855	681855	681855	681855	681855	SPRING LOCK WASHER	2	
33	804505	804505	804505	804505	804505	VALVE BODY ASSY.	1	
33-1	706798	706798	706798	706798	706798	RESET BUTTON	1	
33-2	710587	710587	710587	710587	710587	REINFORCEMENT PLATE A	1	
33-3	771357	771357	771357	771357	771357	CAP	1	
33-4	710853	710853	710853	710853	710853	SPOOL VALVE CASE	1	
33-5	801404	801404	801404	801404	801404	SPOOL VALVE ASSY.	1	
33-6	771356	771356	771356	771356	771356	CAP	1	
33-7	710636	710636	710636	710636	710636	REINFORCEMENT PLATE B	1	
33-8	681855	681855	681855	681855	681855	SPRING LOCK WASHER	4	
33-9	682943	682943	682943	682943	682943	HEXAGON BOLT	4	
34	682918	682918	682918	682918	682918	HEXAGON BOLT	2	
36	686826	686826	686826	686826	686826	BALL VALVE	1	
44	771358	771358	771358	771358	771358	GASKET	1	
45	687242	687242	687242	687242	687242	HEXAGON BOLT	12	
46	682520	682520	682520	682520	682520	SILENCER **	1	
KIT	K10-PC	K10-PN	K10-PH	K10-PS	K10-PT	LIQUID SIDE KIT		
KIT			K115-AM			AIR MOTOR KIT		

\* Not included in liquid end kit.

\*\* Alternative SILENCER part# 686762

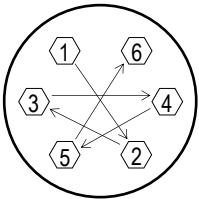
**Air Operated Double Diaphragm Pump**

**General Tools:**

- Socket wrench - 13mm
- Hexagonal box wrenches - 5mm, 6mm
- Snap ring pliers 12-25mm

**Miscellaneous:**

- Assembly Oil - turbine oil class 1 - no additives (equivalent to ISO VGA32 grade)
- Urea grease grade (NLGI) No. 2



**Tightening torque for center rod and out chambers.**

Center Rod	122 in-lbf {14 N-m}
Out Chambers	105 in-lbf {12 N-m}

**Tightening torque for manifold retainer bolts.**

BPC/H/N/S/T	70 in-lbf {8 N-m}
-------------	-------------------

**Customer Notes**

Model #: \_\_\_\_\_  
 Description: \_\_\_\_\_  
 Serial #: \_\_\_\_\_  
 Date Installed: \_\_\_\_\_  
 Department Location: \_\_\_\_\_  
 Tag/Project: \_\_\_\_\_